

# Land Use Bylaw 3357/2006



North

Scale 1:5,000

© The City of Red Deer



- |              |                            |              |                                |
|--------------|----------------------------|--------------|--------------------------------|
|              | Land Use District Boundary |              | Historical Preservation Sites  |
| <i>R1</i>    | Land Use District          |              | Historically Significant Sites |
|              | Exception to District      | <i>HP-32</i> | Historical Site Number         |
| <i>e(ii)</i> | Exception Number           |              | City Boundary                  |
|              | Exempted from District     | <i>123</i>   | Civic Address                  |
| <i>2a</i>    | Exempted Number            |              | Railway                        |
| V18          | Height Overlay District    |              | Proposed Lots                  |
| D95          | Density Overlay District   |              |                                |
| <i>s</i>     | Secondary Suite Permitted  |              |                                |

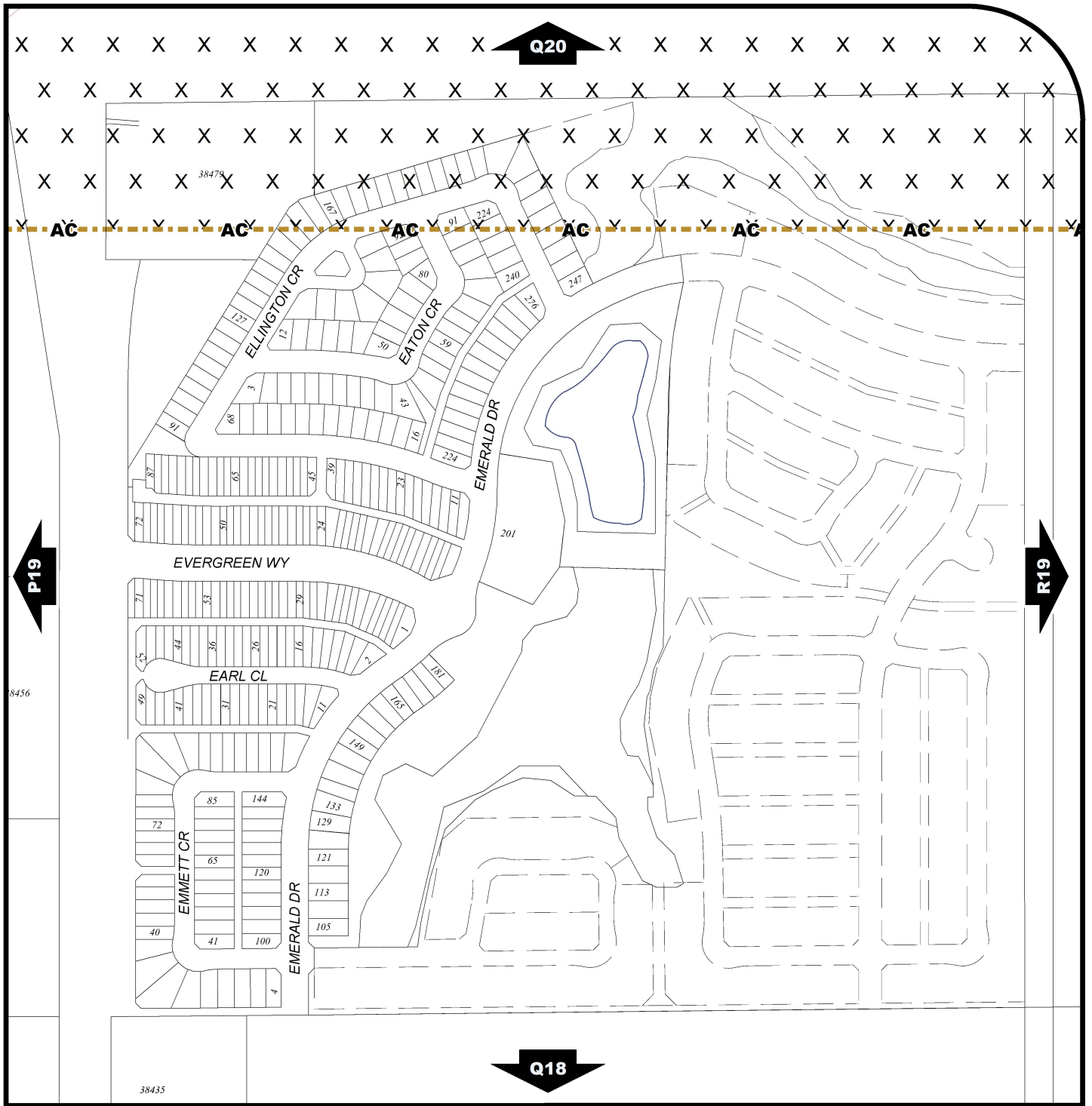
Printed on 2023/01/04

Land Use Districts

**Q19**

NW¼ Sec26 38-27-W4

Refer to Constraints Map



# Land Use Bylaw 3357/2006



North

Scale 1:5,000

© The City of Red Deer



- Escarpment Area
- Flood Fringe
- Floodway
- Landfill Site (approximate)
- Landfill Setback
- Wastewater Treatment Plant Setback
- Major Entry Area
- Pipeline Setback
- AltaLink Consultation/Potential Constraints Area
- Overlay District

- Gaetz - Ross Heritage Area
- Restricted Development Area
- Railway Setback (15m)
- Railway Setback (30m)
- Business Improvement Area
- Historical Preservation Sites
- Historically Significant Sites
- Historical Site Number
- Civic Address
- Railway

- Proposed Lots
- City Boundary

Printed on 2023/01/04

## Land Use Constraints

# Q19

NW 1/4 Sec 26 38-27-W4