

Land Use Bylaw 3357/2006



North

Scale 1:5,000

© The City of Red Deer



	Land Use District Boundary		Historical Preservation Sites
	Land Use District		Historically Significant Sites
	Exception to District		Historical Site Number
	Exception Number		City Boundary
	Exempted from District		Civic Address
	Exempted Number		Railway
	Height Overlay District		Proposed Lots
	Density Overlay District		
	Secondary Suite Permitted		

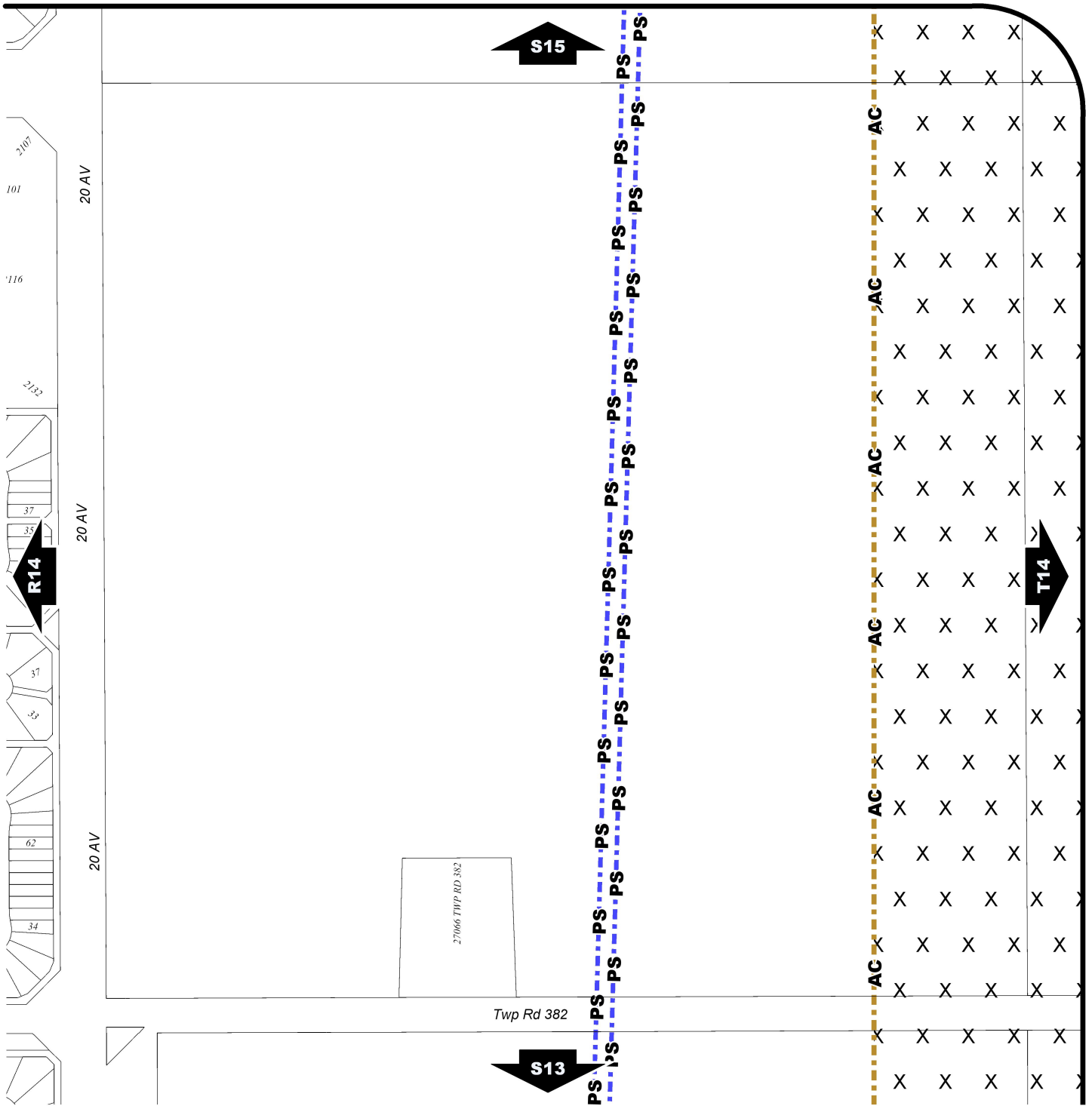
Printed on Jun 18, 2013

Land Use Districts

S14

SW¼ Sec13 38-27-W4

Refer to Constraints Map



Land Use Bylaw 3357/2006



North

Scale 1:5,000

© The City of Red Deer



- | | | | |
|--|--|--|--------------------------------|
| | Escarpment Area | | Gaetz - Ross Heritage Area |
| | Flood Fringe | | Business Revitalization Zone |
| | Floodway | | Historical Preservation Sites |
| | Landfill Site (approximate) | | Historically Significant Sites |
| | Landfill Setback | | Historical Site Number |
| | Major Entry Area | | City Boundary |
| | TransCanada Pipeline Setback | | Civic Address |
| | AltaLink Consultation/Potential Constraints Area | | Railway |
| | Overlay District | | Proposed Lots |

Printed on Jun 18, 2013

Land Use Constraints

S14

SW 1/4 Sec13 38-27-W4