



For more information on FCSS initiatives,
visit www.reddeer.ca/fcss
403 342 8100 | fcss@reddeer.ca

Thank You

2017 FCSS BOARD MEMBERS

Milt Williams: Citizen Representative Red Deer and Board Chair
Valdene Callin: Citizen Representative Red Deer and Vice-Chair
Margaret Gillis: Citizen Representative Red Deer
Shannon Jackson: Citizen Representative Red Deer
Don Church/Dana Depalme/Jean Bota: Councillors – Red Deer County
Tim Wilson/Jeff Bourne: Councillors – Village of Delburne
Lynn Mulder/Lawrence Lee/Ken Johnston: Councillors – City of Red Deer
Richard Cloutier/Leah Nelson: Councillors – Village of Elnora
Lloyd Lane/Sandy Gamble: Councillors – Town of Bowden
Kathy Sitter/Tyrone Muller: Councillors – Town of Penhold

2017 SOCIAL PLANNING STAFF – The City of Red Deer

2017 REGIONAL PARTNERS FCSS STAFF

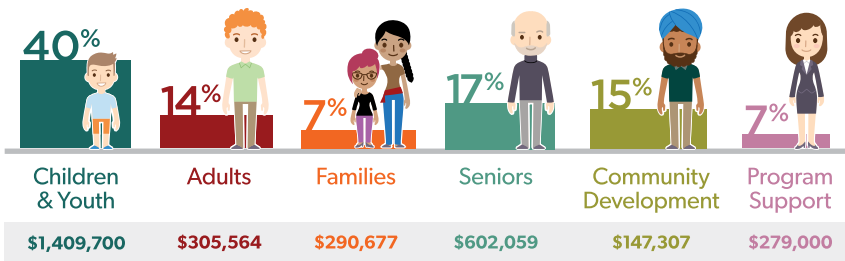


WHAT IS FCSS? (Family & Community Support Services)

FCSS IS A PARTNERSHIP BETWEEN LOCAL MUNICIPAL GOVERNMENTS, MÉTIS SETTLEMENTS, AND ALBERTA COMMUNITY AND SOCIAL SERVICES.

Within the parameters of the FCSS Act and Regulation, each municipality or Métis settlement determines how the FCSS funding they receive should be allocated to best meet the social programming needs of their community. Local FCSS programs are part of the larger provincial program that collectively ensures Albertans have access to a strong network of preventive social supports. Red Deer & District FCSS supports programs that help to accomplish its vision of empowered individuals, healthy families, and caring communities.

FUNDING DISTRIBUTION AMONGST POPULATIONS



RED DEER & DISTRICT FCSS FUNDING

Red Deer & District FCSS creates connections through the projects we fund. We connect isolated seniors to cheerful volunteers, desperate people to agencies with expertise, suicidal teens to counsellors, and abused partners to projects that give them confidence to leave a relationship and rebuild.

Annual reporting is based upon:

Qualitative data: project level outcomes and personal evidence of client outcomes.

Quantitative data: demographics and surveys.

2017 FUNDING & PEOPLE SERVED

\$4,036,647

PARTNER CONTRIBUTIONS

Province of Alberta	\$3,229K
The City of Red Deer	\$578K
Red Deer County	\$139K
Town of Penhold	\$40K
Town of Bowden	\$23K
Village of Elnora	\$15K
Village of Delburne	\$13K



28,972

PEOPLE SERVED

The City of Red Deer	18,378
Village of Elnora	3,697
Red Deer County	2,635
Village of Delburne	1,842
Town of Penhold	1,227
Town of Bowden	1,193

FCSS funding is provided through Alberta Community and Social Services and the six partner municipalities; administrative support is provided by the Social Planning department of The City of Red Deer. There is a strong collaboration between all of these partners. Within the FCSS regulations, the Province of Alberta provides 80% of the funding and partner municipalities provide the remaining 20%.

1,207 ABORIGINAL PARTICIPANTS
473 NEWCOMERS <5 YEARS IN CANADA

CHILD & YOUTH PROJECTS

15,870
CHILDREN & YOUTH
ACCESSING OUR SERVICES

Benalto Playschool

Benalto Playschool

Big Brothers/Sisters of Innisfail

BBBSI Rural Mentoring Program
Community Facilitator for "Go Girls"

Bowden Play & Learn Society

Bowden Play & Learn Playschool

Central Alberta Refuge Effort (CARE)

Immigrant Youth Program

Delburne Playschool Society

Delburne Playschool Program

Elnora Playschool

Elnora Playschool

Town of Penhold

Penhold Youth Club

McMan Youth Family and Community Services

Parent Child Relationship Development
Youth Prevention Group/Parent Support Group

Chinooks Edge School Division

Bowden Grandview School-Resiliency in Children and Youth
Family School Wellness Program

Red Deer Catholic Regional Schools

Family School Enhancement Counsellors

Red Deer Child Care Society

Before and After School Program

Red Deer Public School District

Bullying Awareness and Prevention Program
Community Liaison Worker

Red Deer Youth & Volunteer Centre Foundation

Big Brothers & Big Sisters of Red Deer & District
Boys & Girls Club of Red Deer & District

Spruce View Rural Child Care Society

Spruce View Playschool



CHILD & YOUTH PROJECT OUTCOMES

OUTCOMES INCLUDE POSITIVE DEVELOPMENT, PERSONAL WELL-BEING, AND CONNECTION TO OTHERS.

**BIG BROTHERS/SISTERS OF INNISFAIL:
COMMUNITY FACILITATOR FOR "GO GIRLS"**

100% of participants surveyed agreed that they feel confident enough to share ideas and feelings with others.

“

“They [the girls] really developed a strong support group within each other. They realized that they are not alone and all struggled the same.”

**RED DEER YOUTH & VOLUNTEER CENTRE
FOUNDATION: BOYS & GIRLS CLUB OF
RED DEER & DISTRICT**

93% of participants surveyed feel the programs have helped them feel good about themselves.

“

“I have learned that I can be confident and do anything if I put my mind to it, and that anything is possible.”

**CHINOOKS EDGE SCHOOL DIVISION:
FAMILY SCHOOL WELLNESS PROGRAM**

95% of the sample population achieved one or more of their goals as identified in their case plans.

90% of parents indicated that Family School Wellness helped to improve their child's ability to be successful.

“

“In 2017, we provided 58 [preventive] programs to 2901 students.”

FAMILY PROJECTS

936
FAMILIES
ACCESSING OUR SERVICES

Red Deer Family Service Bureau
Home Early Learning Partners
Infant Preschool Wellness Program

Town of Penhold
Penhold Family Resource
and Support Program



FAMILY PROJECT OUTCOMES

THE MAIN OUTCOME FOR THIS PROJECT IS IMPROVED SOCIAL WELL-BEING FOR FAMILIES THROUGH TEACHING POSITIVE PARENTING TECHNIQUES.

RED DEER FAMILY SERVICE BUREAU:
HOME EARLY LEARNING PARTNERS

100% of participants surveyed agreed that they are able to communicate effectively with their child, spouse, partner, and/or child's school.



"Being in HELP [Home Early Learning Program] has helped me with being a part of school meetings and is helping me get in contact with agencies for work.

"Another participant reported 'not feeling alone in my struggles with raising my grandkids.'"

TOWN OF PENHOLD:
PENHOLD FAMILY RESOURCE AND SUPPORT PROGRAM

96% of participants report an increased understanding Early Childhood Development.



"It is always great to see the dads come out and participate with their children; to spend quality time together. It is also great to see not only the dads spending quality time with their kids, but starting to interact with each other through conversation."

ADULT PROJECTS

2,304
ADULTS
ACCESSING OUR SERVICES

Central Alberta Refugee Effort (CARE) Committee
Learning Together Program

Vantage Community Services
Walk-In Clinic

Shalom Counseling Centre of Alberta
Stronger Individuals & Families
Through Counselling



ADULT PROJECT OUTCOMES

OUTCOMES INCLUDE PERSONAL WELL-BEING IN DEALING WITH LIFE'S DIFFICULTIES, AND COMMUNITY CONNECTION AND ENGAGEMENT THROUGH AWARENESS AND USE OF PROGRAMS AND SERVICES AVAILABLE.

CENTRAL ALBERTA REFUGEE EFFORT (CARE) COMMITTEE:
LEARNING TOGETHER PROGRAM

100% of participants surveyed agree that
"because of the Learning Together
Program, I know more about how to
access the community resources I need."

“

"This participant credits the Learning Together Program for the opportunity it provides to immigrant women like her where they can develop their practical and language skills as well as confidence to face challenges such as she has."



SENIOR PROJECTS

2,294
SENIORS
ACCESSING OUR SERVICES

Golden Circle Senior Resource Centre

Golden Circle Outreach

Red Deer Family Service Bureau

Home Support Program

Red Deer Meals on Wheels

Meals on Wheels Red Deer



SENIOR PROJECT OUTCOMES

OUTCOMES INCLUDE CONNECTION WITH OTHERS, MEASURED THROUGH THE EXTENT TO WHICH PEOPLE HAVE THE SUPPORT OF FAMILY, FRIENDS AND OTHERS.

GOLDEN CIRCLE SENIOR RESOURCE CENTRE:
GOLDEN CIRCLE OUTREACH

75% of the participants accessing Outreach Services and The Golden Circle feel supported by the project.

“

“We received a referral from COSMOS regarding a 62 year old man who had not worked for two years and was four months away from exhausting all his savings, running the risk of losing his house and living on the street. Outreach was able to support this gentleman in the community so he can still live independently in his own home with guidance.”

RED DEER MEALS ON WHEELS:
MEALS ON WHEELS RED DEER

100% of participants surveyed agreed that they can rely on Red Deer Meals on Wheels for support and help.

“

“I am so fortunate to have my Meals on Wheels family visit me every day! They bring me hot food and a smile. They are why I get dressed everyday.”

“If not for Meals on Wheels delivery, she [a client] would not have anyone stopping in to check on her.”

COMMUNITY

Central Alberta Refugee Effort (CARE)

Immigrant Drop in Centre

COSMOS Group of Companies

Central Alberta Poverty Reduction Alliance (CAPRA)

Red Deer Youth & Volunteer Centre Foundation

Master Plan Initiative

United Way Central Alberta

211 Phone Services

Village of Elnora

Elnora FCSS Expansion of Services

VILLAGE OF ELNORA: ELNORA FCSS EXPANSION OF SERVICES

100% of participant surveyed agreed that “my child/children feels good about themselves because they help out in the community.”

“

“The Youth Centre’s greatest success story is our youth’s involvement in the community. Every holiday (Valentines Day, Thanksgiving, Christmas etc.) the kids make cards, baked goods, and/or goodie bags and deliver them to the community members and businesses. The reactions we get from the community is amazing; they really have embraced the youth in our community. The connection between the community and the Youth Centre is so heart warming.”

COMMUNITY INITIATIVES

Anti-Bullying: Positive, inclusive Programming

Community Capacity Building: Parent Link Movie Morning, Interagency Meetings, Community Garden, Volunteer Coordination, Meals on Wheels

Early Childhood Development: East and West Red Deer County Early Childhood Development Coalitions, Welcome to Kindergarten/Playschool, Partner with Family Resource Coordinator

Homelessness: Permanent Supportive Housing Development Study, Point in Time Homeless Count, “Making the Shift” – Youth homelessness research

Neighbourhood Building: Great Neighbours

Poverty Reduction: Good Food Box, Kids Clothing and Equipment Swap, Fee Assistance Program

Safe Communities: Healthy Living Coalition, Home Alone course, Community Safety Strategy

Senior Wellness: Connect with Seniors Program, 2000 Steps Walking Group, Intergenerational Activities

Social Connection: Spruce View and Benalto Community Welcomers Program, Summer Youth Program, Winter Festival, Community Directories

Substance Abuse Prevention: Community Crime and Drug Presentation

Youth Engagement: Community Playgroup/Parent Link, Kids Cooking Corner, Healthy Relationship Plus Program

FCSS PROJECTS

Each year some funds are set aside for projects and events to benefit all partner communities. This year some of these funds were used for:

Agency Capacity Building
Books on the Bus
Neighbourhood Life/Great Neighbours

”

“Following a neighbourhood barbecue, a neighbour got interested in my garden, started his own in a small space on his yard and our interest in each other’s gardens has become a real connecting place.”

– *Neighbourhood Life: Great Neighbours*