

Land Use Bylaw 3357/2006



North

Scale 1:5,000

© The City of Red Deer



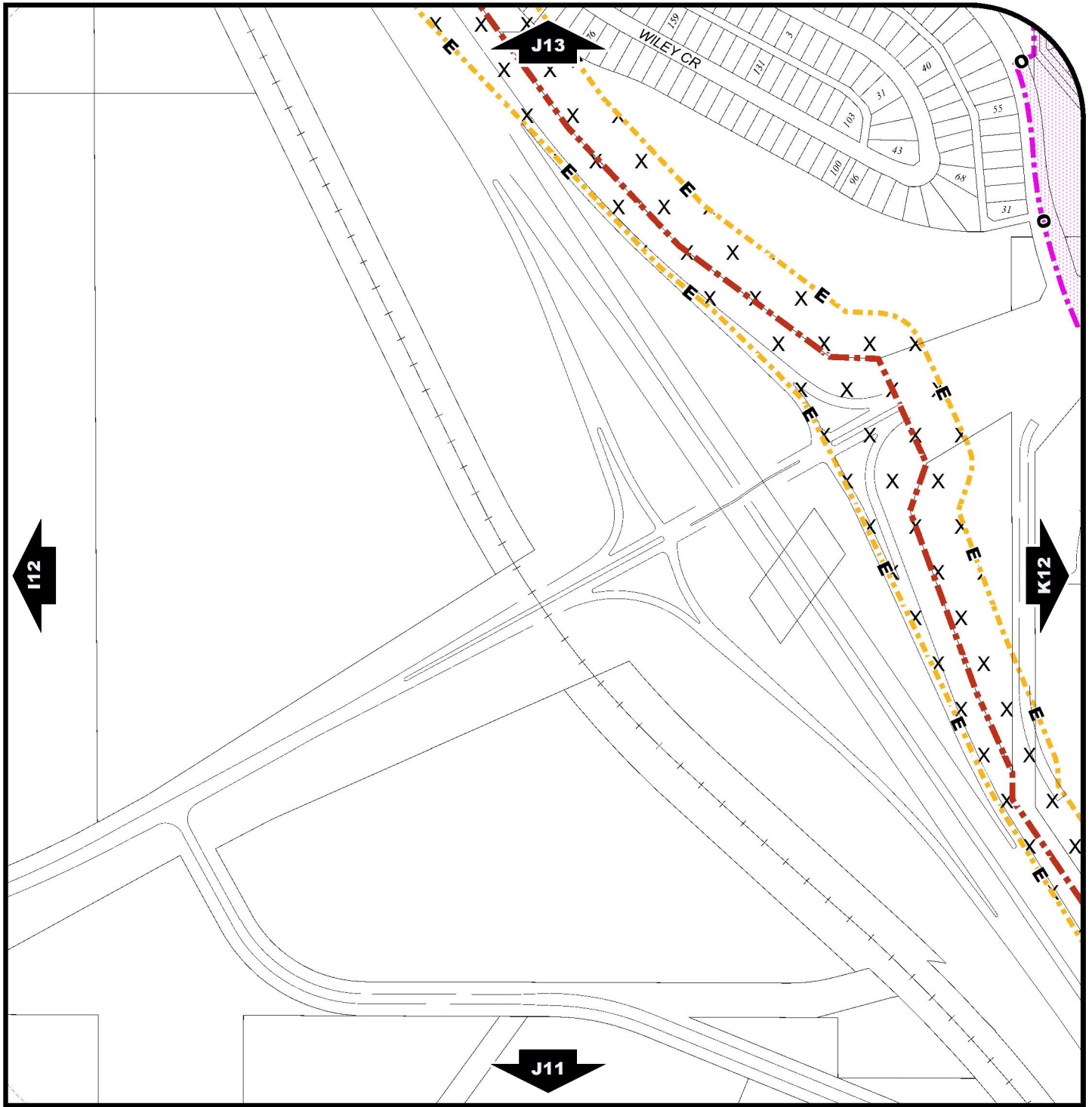
	Land Use District Boundary		Historical Preservation Sites
<i>R1</i>	Land Use District		Historically Significant Sites
	Exception to District	<i>HP-32</i>	Historical Site Number
<i>e(ii)</i>	Exception Number		City Boundary
	Exempted from District	<i>123</i>	Civic Address
<i>2a</i>	Exempted Number		Railway
V18	Height Overlay District		Proposed Lots
D95	Density Overlay District		
<i>s</i>	Secondary Suite Permitted		

Printed on 2022/03/23

Land Use Districts

J12

SE¼ Sec7 38-27-W4



Land Use Bylaw 3357/2006

North
Scale 1:5,000
© The City of Red Deer

Escarpment Area	Gaetz - Ross Heritage Area	Proposed Lots
Flood Fringe	Restricted Development Area	City Boundary
Floodway	Railway Setback (15m)	
Landfill Site (approximate)	Railway Setback (30m)	
Landfill Setback	Business Improvement Area	
Wastewater Treatment Plant Setback	Historical Preservation Sites	
Major Entry Area	Historically Significant Sites	
Pipeline Setback	Historical Site Number	
AltaLink Consultation/Potential Constraints Area	Civic Address	
Overlay District	Railway	

Printed on 2023/04/26

Land Use Constraints
J12
SE¼ Sec7 38-27-W4