

# Land Use Bylaw 3357/2006



North

Scale 1:5,000

© The City of Red Deer



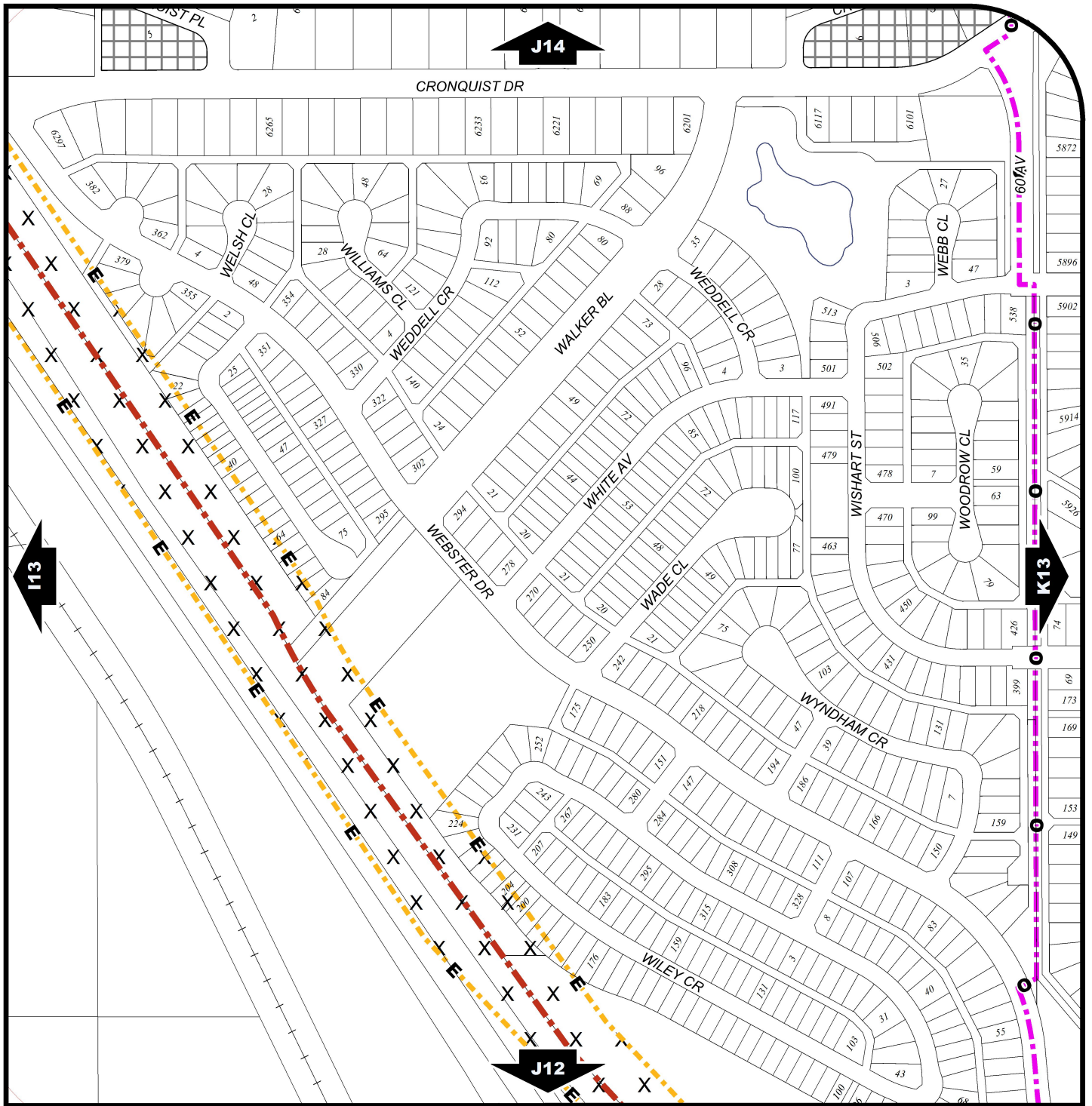
- |              |                            |              |                                |
|--------------|----------------------------|--------------|--------------------------------|
|              | Land Use District Boundary |              | Historical Preservation Sites  |
| <b>R1</b>    | Land Use District          |              | Historically Significant Sites |
|              | Exception to District      | <b>HP-32</b> | Historical Site Number         |
| <b>e(ii)</b> | Exception Number           |              | City Boundary                  |
|              | Exempted from District     | <b>123</b>   | Civic Address                  |
| <b>2a</b>    | Exempted Number            |              | Railway                        |
| <b>V18</b>   | Height Overlay District    |              | Proposed Lots                  |
| <b>D95</b>   | Density Overlay District   |              |                                |
| <b>s</b>     | Secondary Suite Permitted  |              |                                |

Printed on 2016/07/05

Land Use Districts

**J13**

NE¼ Sec7 38-27-W4



# Land Use Bylaw 3357/2006



North  
Scale 1:5,000

© The City of Red Deer



- |  |                                |               |
|--|--------------------------------|---------------|
| Escarpment Area                                  | Subdivision Consideration      | Railway       |
| Flood Fringe                                     | Restricted Development Area    | Proposed Lots |
| Floodway   | Railway Setback (15m)          | City Boundary |
| Landfill Site (approximate)                      | Railway Setback (30m)          |               |
| Landfill Setback                                 | Unknown Flood Risk             |               |
| Major Entry Area                                 | Business Revitalization Zone   |               |
| Pipeline Setback                                 | Historical Preservation Sites  |               |
| AltaLink Consultation/Potential Constraints Area | Historically Significant Sites |               |
| Overlay District                                 | Historical Site Number         |               |
| Gaetz - Ross Heritage Area                       | Civic Address                  |               |

Printed on 2016/07/04

## Land Use Constraints

# J13

NE¼ Sec7 38-27-W4