

Land Use Bylaw 3357/2006



North

Scale 1:5,000

© The City of Red Deer



- | | | | |
|--------------|----------------------------|--------------|--------------------------------|
| | Land Use District Boundary | | Historical Preservation Sites |
| <i>R1</i> | Land Use District | | Historically Significant Sites |
| | Exception to District | <i>HP-32</i> | Historical Site Number |
| <i>e(ii)</i> | Exception Number | | City Boundary |
| | Exempted from District | <i>123</i> | Civic Address |
| <i>2a</i> | Exempted Number | | Railway |
| V18 | Height Overlay District | | Proposed Lots |
| D95 | Density Overlay District | | |
| s | Secondary Suite Permitted | | |

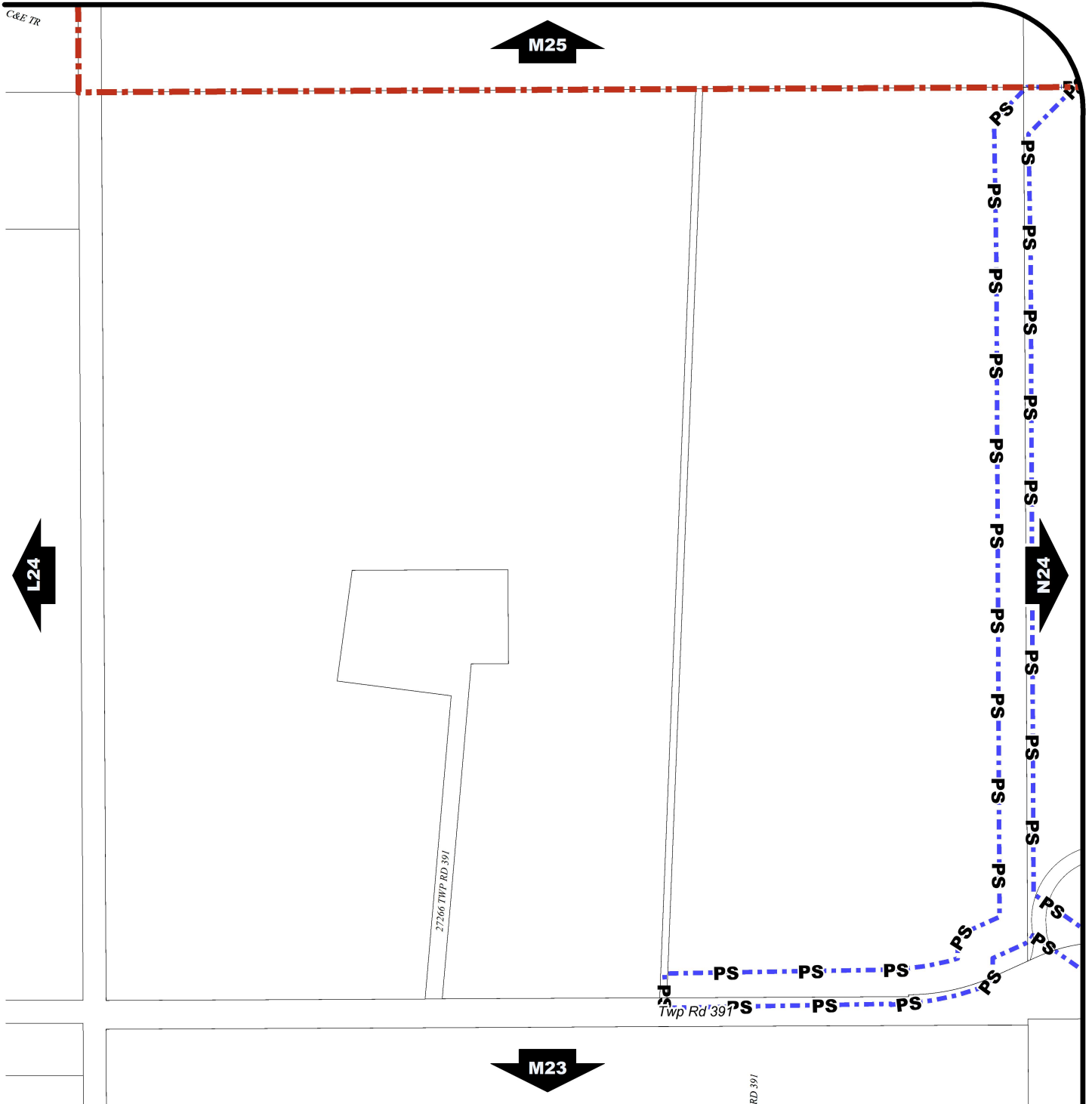
Printed on 2016/02/04

Land Use Districts

M24

SW¼ Sec10 39-27-W4

Refer to Constraints Map



Land Use Bylaw 3357/2006



North

Scale 1:5,000

© The City of Red Deer



- Escarpment Area
- Flood Fringe
- Floodway
- Landfill Site (approximate)
- Landfill Setback
- Major Entry Area
- Pipeline Setback
- AltaLink Consultation/Potential Constraints Area
- Overlay District
- Gaetz - Ross Heritage Area

- Subdivision Consideration
- Restricted Development Area
- Railway Setback (15m)
- Railway Setback (30m)
- Unknown Flood Risk
- Business Revitalization Zone
- Historical Preservation Sites
- Historically Significant Sites
- Historical Site Number
- Civic Address

- Railway
- Proposed Lots
- City Boundary

Printed on 2016/02/04

Land Use Constraints

M24

SW¼ Sec10 39-27-W4