

Land Use Bylaw 3357/2006



North

Scale 1:5,000

© The City of Red Deer



	Land Use District Boundary		Historical Preservation Sites
<i>R1</i>	Land Use District		Historically Significant Sites
	Exception to District	<i>HP-32</i>	Historical Site Number
<i>e(ii)</i>	Exception Number		City Boundary
	Exempted from District	<i>123</i>	Civic Address
<i>2a</i>	Exempted Number		Railway
V18	Height Overlay District		Proposed Lots
D95	Density Overlay District		
<i>s</i>	Secondary Suite Permitted		

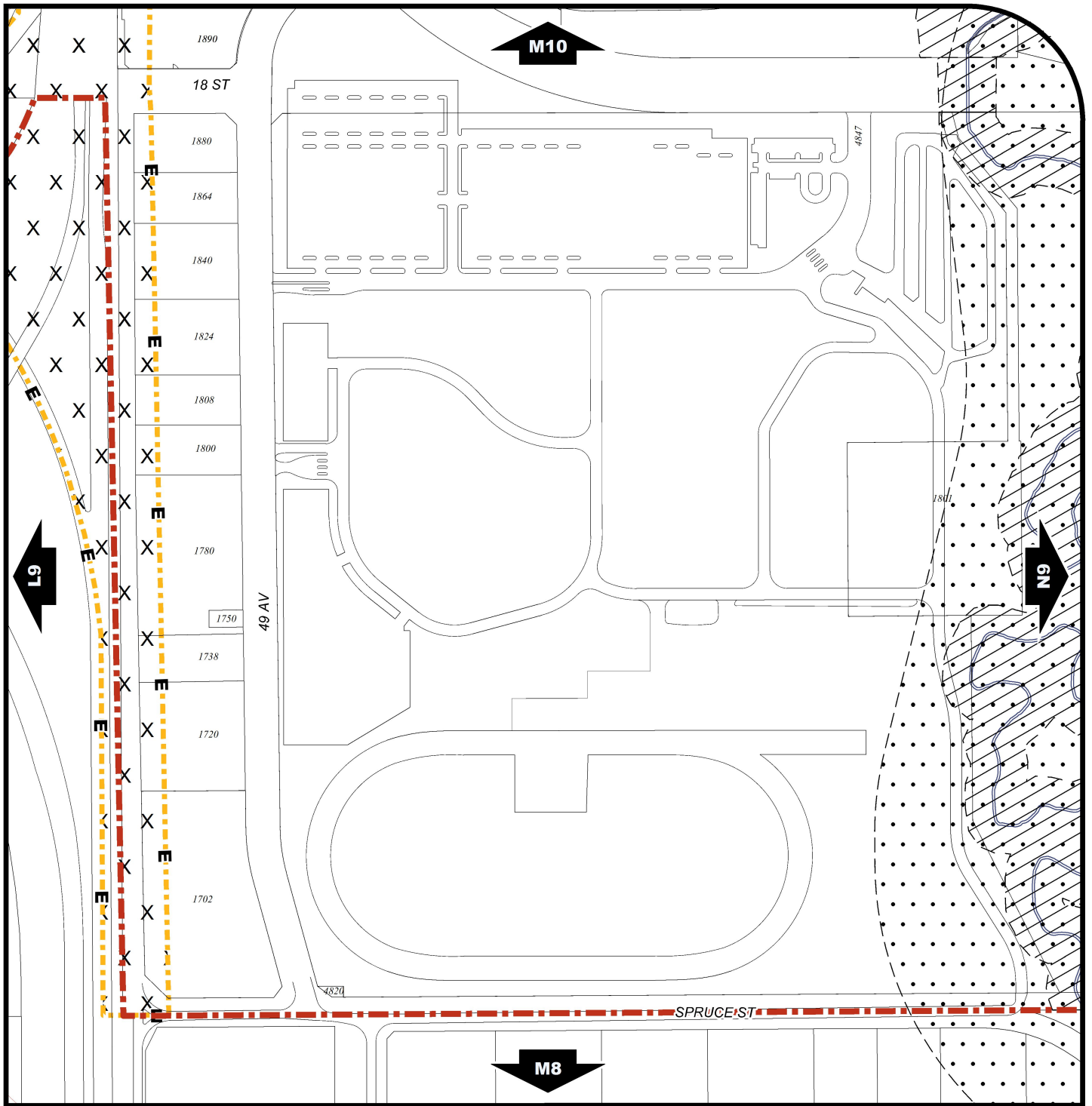
Printed on 2016/07/04

Land Use Districts

M9

NW¼ Sec33 37-27-W4

Refer to Constraints Map



Land Use Bylaw 3357/2006



North

Scale 1:5,000

© The City of Red Deer



- | | | |
|--|--------------------------------|---------------|
| Escarpment Area | Subdivision Consideration | Railway |
| Flood Fringe | Restricted Development Area | Proposed Lots |
| Floodway | Railway Setback (15m) | City Boundary |
| Landfill Site (approximate) | Railway Setback (30m) | |
| Landfill Setback | Unknown Flood Risk | |
| Major Entry Area | Business Revitalization Zone | |
| Pipeline Setback | Historical Preservation Sites | |
| AltaLink Consultation/Potential Constraints Area | Historically Significant Sites | |
| Overlay District | Historical Site Number | |
| Gaetz - Ross Heritage Area | Civic Address | |

Printed on 2016/07/04

Land Use Constraints

M9

NW 1/4 Sec 33 37-27-W4