

Land Use Bylaw 3357/2006



North

Scale 1:5,000

© The City of Red Deer



	Land Use District Boundary		Historical Preservation Sites
R1	Land Use District		Historically Significant Sites
	Exception to District		Historical Site Number
	Exception Number		City Boundary
	Exempted from District		Civic Address
2a	Exempted Number		Railway
V18	Height Overlay District		Proposed Lots
D95	Density Overlay District		
s	Secondary Suite Permitted		

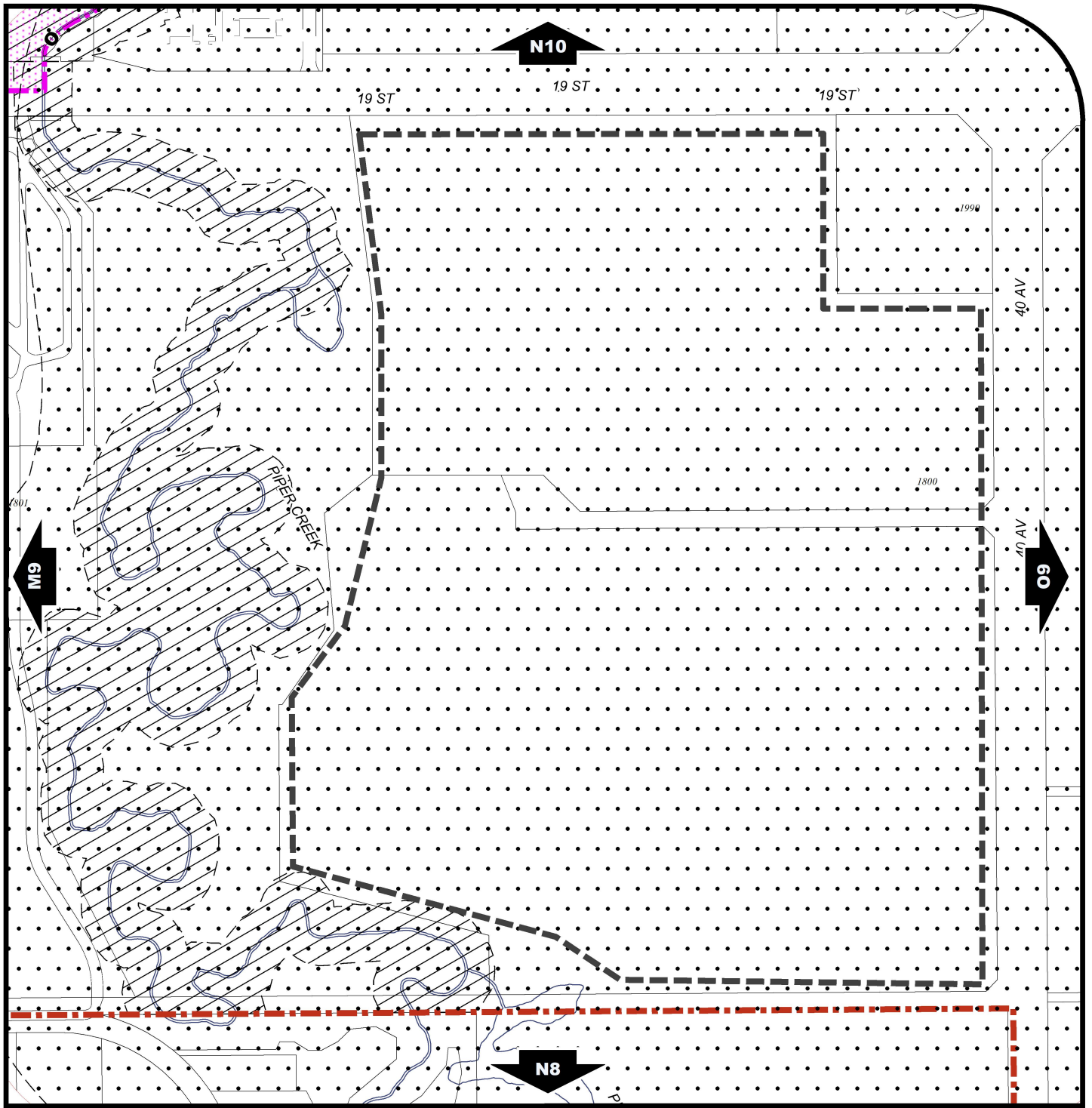
Printed on Oct 26, 2009

Land Use Districts

N9

NE¼ Sec33 37-27-W4

Refer to Constraints Map



Land Use Bylaw 3357/2006



North
Scale 1:5,000

© The City of Red Deer



- | | | | | | |
|--|--|--|--------------------------------|--|---------------|
| | Escarpment Area | | Gaetz - Ross Heritage Area | | Proposed Lots |
| | Flood Fringe | | Restricted Development Area | | City Boundary |
| | Floodway | | Railway Setback (15m) | | |
| | Landfill Site (approximate) | | Railway Setback (30m) | | |
| | Landfill Setback | | Business Improvement Area | | |
| | Wastewater Treatment Plant Setback | | Historical Preservation Sites | | |
| | Major Entry Area | | Historically Significant Sites | | |
| | Pipeline Setback | | Historical Site Number | | |
| | AltaLink Consultation/Potential Constraints Area | | Civic Address | | |
| | Overlay District | | Railway | | |

Printed on 2019/09/17

Land Use Constraints

N9

NE 1/4 Sec 33 37-27-W4