

# Land Use Bylaw 3357/2006



North

Scale 1:5,000

© The City of Red Deer



	Land Use District Boundary		Historical Preservation Sites
	R1 Land Use District		Historically Significant Sites
	Exception to District		Historical Site Number
	Exception Number		City Boundary
	Exempted from District		Civic Address
	Exempted Number		Railway
	V18 Height Overlay District		Proposed Lots
	D95 Density Overlay District		
	s Secondary Suite Permitted		

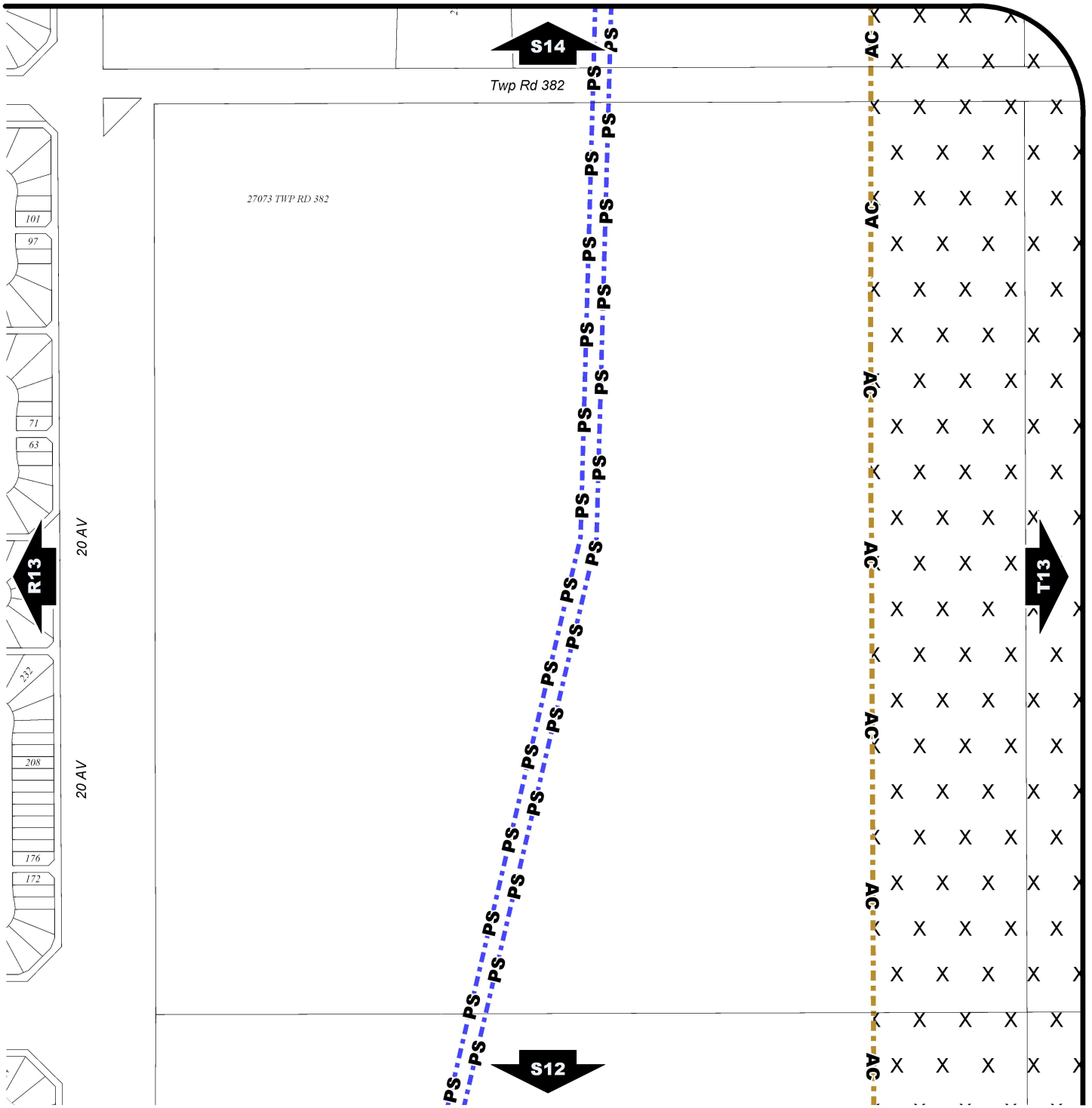
Printed on Jun 18, 2013

Land Use Districts

**S13**

NW¼ Sec12 38-27-W4

Refer to Constraints Map



# Land Use Bylaw 3357/2006



North

Scale 1:5,000

© The City of Red Deer



- |  |  |  |                                |
|--|--|--|--------------------------------|
|  | Escarpment Area                                  |  | Gaetz - Ross Heritage Area     |
|  | Flood Fringe                                     |  | Business Revitalization Zone   |
|  | Floodway   |  | Historical Preservation Sites  |
|  | Landfill Site (approximate)                      |  | Historically Significant Sites |
|  | Landfill Setback                                 |  | Historical Site Number         |
|  | Major Entry Area                                 |  | City Boundary                  |
|  | TransCanada Pipeline Setback                     |  | Civic Address                  |
|  | AltaLink Consultation/Potential Constraints Area |  | Railway                        |
|  | Overlay District                                 |  | Proposed Lots                  |

Printed on Jun 18, 2013

Land Use Constraints

**S13**

NW¼ Sec12 38-27-W4