

# Zoning Bylaw 3357/2024

North



Scale 1:5,000  
© The City of Red Deer



|  |                        |  |                                |
|--|------------------------|--|--------------------------------|
|  | Land Use Zone Boundary |  | Historical Preservation Sites  |
|  | Land Use Zone          |  | Historically Significant Sites |
|  | Exception to Zone      |  | Historical Site Number         |
|  | Exception Number       |  | City Boundary                  |
|  | Exempted from Zone     |  | Civic Address                  |
|  | Exempted Number        |  | Railway                        |
|  | Height Overlay Zone    |  | Proposed Lots                  |
|  | Density Overlay Zone   |  |                                |
|  | Suite Locations        |  |                                |

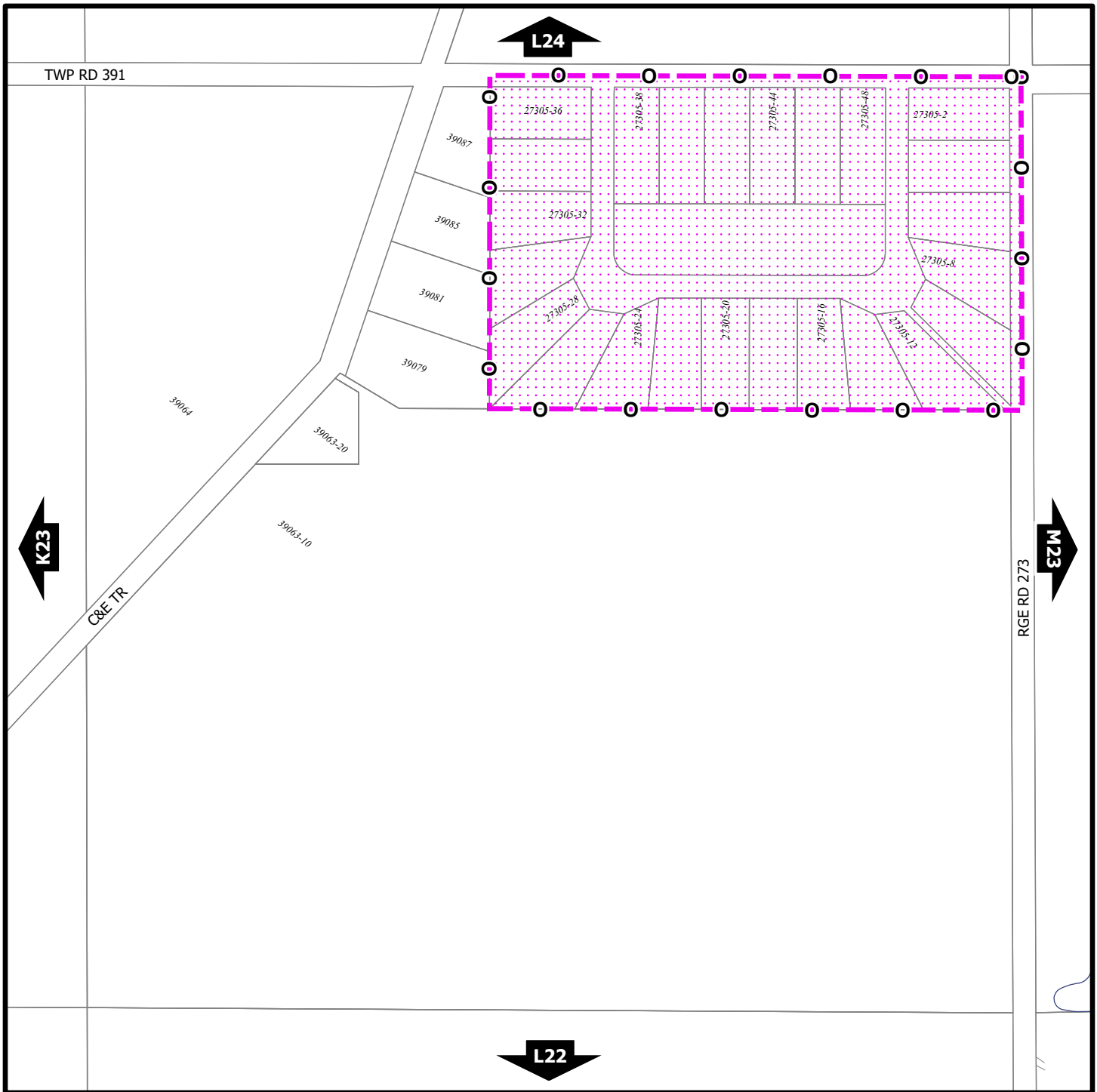
Printed on August 23, 2024

Land Use Zones

**L23**

NE¼ Sec4 39-27-W4

Refer to Constraints Map



## Zoning Bylaw 3357/2024

North



Scale 1:5,000  
© The City of Red Deer



|                                |  |                                    |
|--------------------------------|--|------------------------------------|
| AC                             | AltaLink Consultation/<br>Potential Constraints Area | Landfill Site (approximate)        |
| B                              | Business Improvement Area                            | Landfill Setback                   |
| Escarpment Area                |  | Major Entry Area                   |
| Flood Fringe                   |  | Overlay District                   |
| Floodway                       |  | Restricted Development Area        |
| Gaetz - Ross Heritage Area     |  | Pipeline Setback                   |
| Historical Preservation Sites  |  | Wastewater Treatment Plant Setback |
| Historically Significant Sites |  | Railway Setback (15m)              |
| HP-32                          | Historical Site Number                               | Railway Setback (30m)              |

|     |               |
|-----|---------------|
| 123 | Civic Address |
| --- | Proposed Lots |
| +++ | Railway       |
| --- | City Boundary |

Printed on August 23, 2024

Land Use Constraints

**L23**

NE1/4 Sec4 39-27-W4