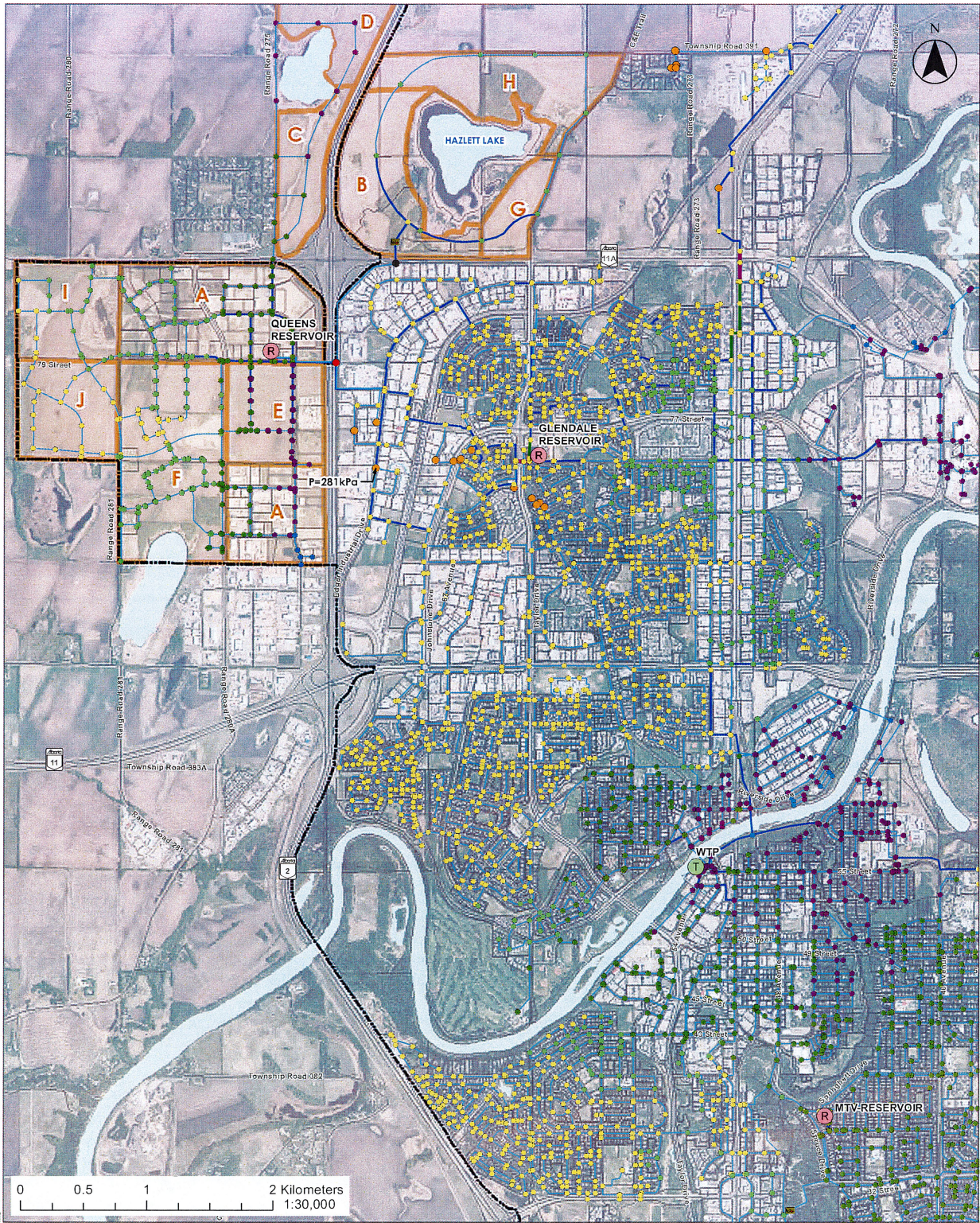


Completed By: AL
Date: 6/23/2023

Project No.: 110170064



Figure 6.4: Scenario 1
Pressures and Pipe Velocities in the Night Filling - Current Standard
City of Red Deer Water Model Update
City of Red Deer



Facilities

- Booster Station
- Reservoir
- Water Treatment Plant
- Pressure Reducing Valve
- Red Deer City Limits
- Growth Analysis

Pressure

- < 250 kPa (36.3 psi)
- 250 - 300 kPa (36.3 - 43.5 psi)
- 300 - 400 kPa (43.6 - 58.0 psi)
- 400 - 500 kPa (58.0 - 72.5 psi)
- 500 - 600 kPa (72.5 - 87.0 psi)
- 600 - 650 kPa (87.0 - 94.0 psi)
- 650 - 700 kPa (94.0 - 101.5 psi)
- 700 - 750 kPa (101.5 - 105.8 psi)
- > 750 kPa (105.8 psi)

Velocity

- >1.5 m/s
- 1.25 - 1.5 m/s
- 1.0 - 1.25 m/s
- 0.5 - 1.0 m/s
- 0.0 - 0.5 m/s

Completed By: AL
Date: 6/16/2023

Project No.: 110170064



Figure 6.5: Scenario 1
Pressures and Pipe Velocities in the PHD - Current Standard
City of Red Deer Water Model Update
City of Red Deer

S:\Projects\2023\110170064\110170064_PHD\110170064_PHD\110170064_PHD.mxd
 User: AL
 Date: 6/16/2023 10:53:17 AM
 Project: 110170064