

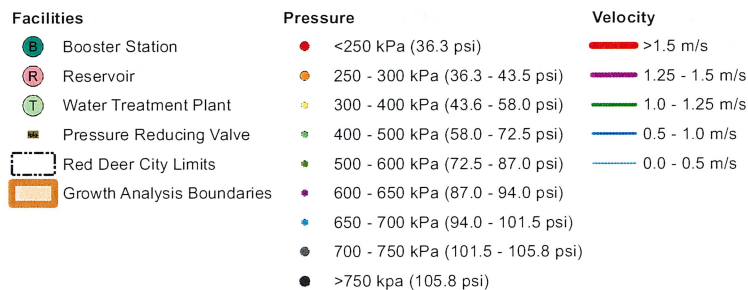
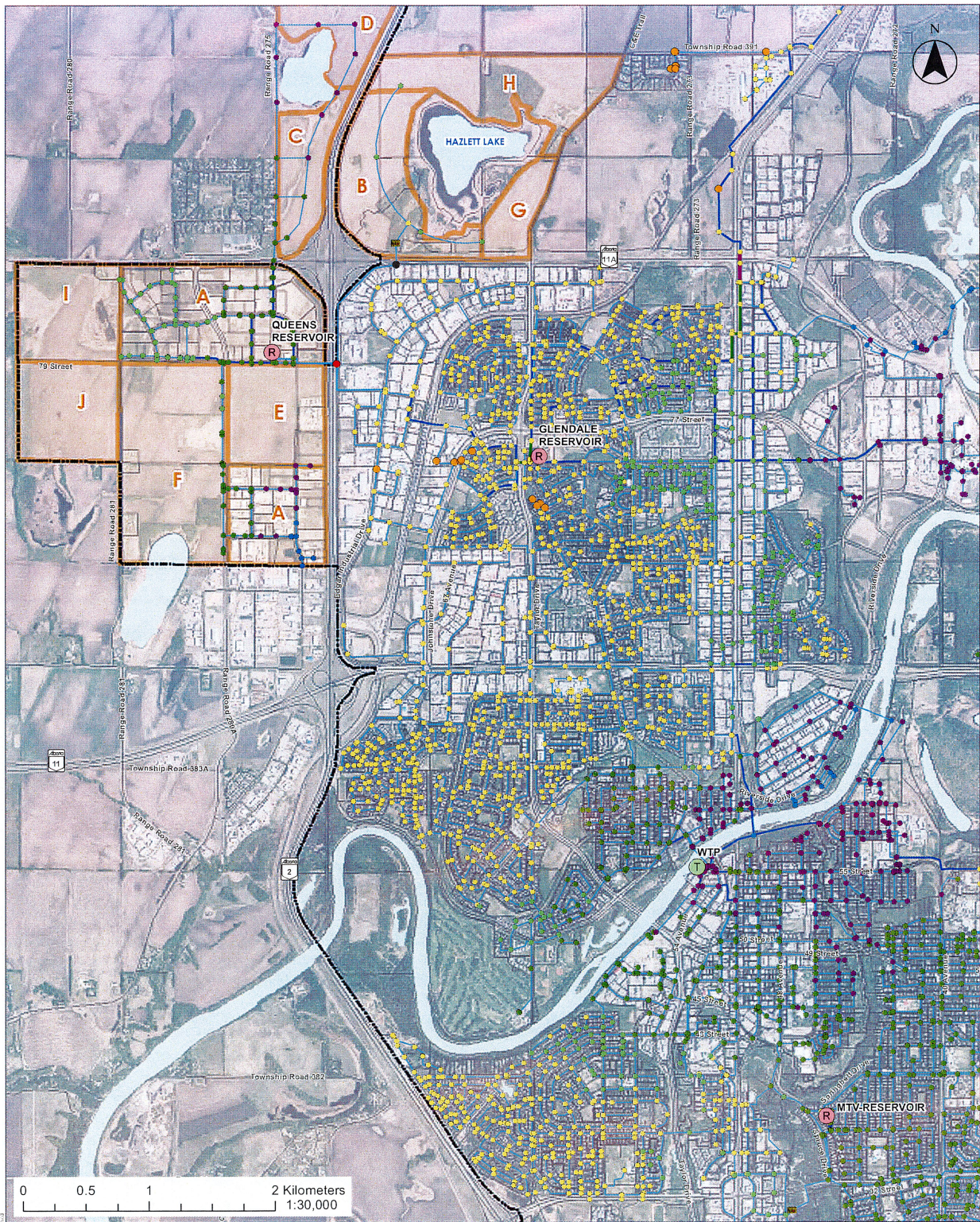
S:\Data\2023\23-9-01-01 User\alder
 C:\Users\alder\AppData\Local\Temp\101710064\Figures\Figures_Velocity_Aggr_101710064.mxd

Completed By: AL
Date: 6/23/2023

Project No.: 110170064



Figure 6.16: Scenario 4
Pressures and Pipe Velocities in the Night Filling - Current Standard
 City of Red Deer Water Model Update
 City of Red Deer



S:\Data\110170064\PHD - Current Standard\110170064\PHD - Current Standard\110170064\PHD - Current Standard\PHD.mxd
 User: albert@stantec.com
 Date: 6/16/2023

Completed By: AL
Date: 6/16/2023

Project No.: 110170064



Figure 6.17: Scenario 4
Pressures and Pipe Velocities in the PHD - Current Standard
 City of Red Deer Water Model Update
 City of Red Deer