

Facilities	Available Fire Flow	Pipe Network Diameter	Pipe Network Diameter
Booster Station	<75 l/s	50mm	450 mm
Reservoir	75 - 135 l/s	100 mm	500 mm
Water Treatment Plant	135 - 180 l/s	150 mm	750 mm
Pressure Reducing Valve	180 - 233 l/s	200 mm	900 mm
Red Deer City Limits	233 - 300 l/s	250 mm	1050 mm
Growth Analysis Boundaries	300 - 400 l/s	300 mm	1200 mm
	>400 l/s	350 mm	>1200 mm
		400 mm	

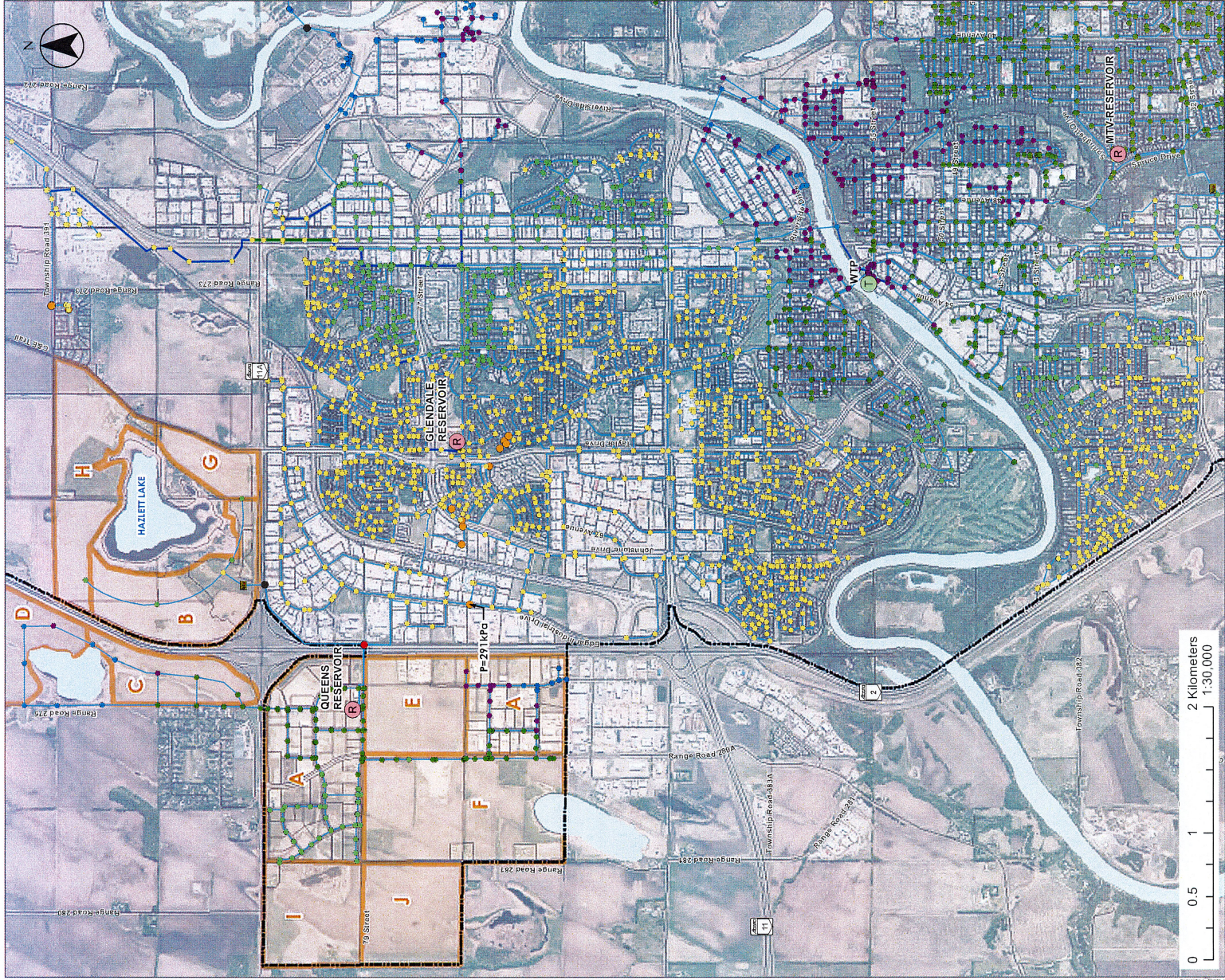
Saved Date: 5/16/2023 3:44:29 PM User: albert
 C:\Users\albert\Documents\Projects\110170064\Figures\Fig_6.38_Scenario_4_Relaxed_Standard_MDD_1:30,000.mxd

Completed By: AL
Date: 6/16/2023

Project No.: 110170064



Figure 6.38: Scenario 4
Available Fire Flows in MDD - Relaxed Standard
 City of Red Deer Water Model Update
 City of Red Deer



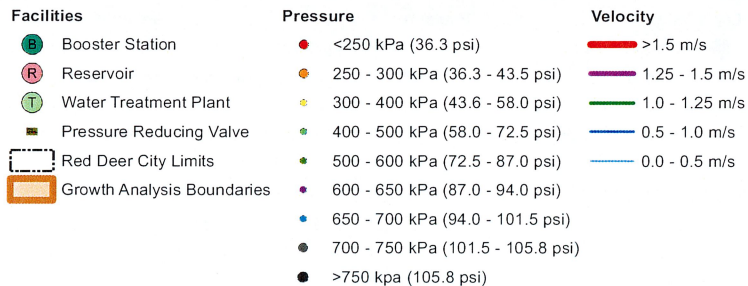
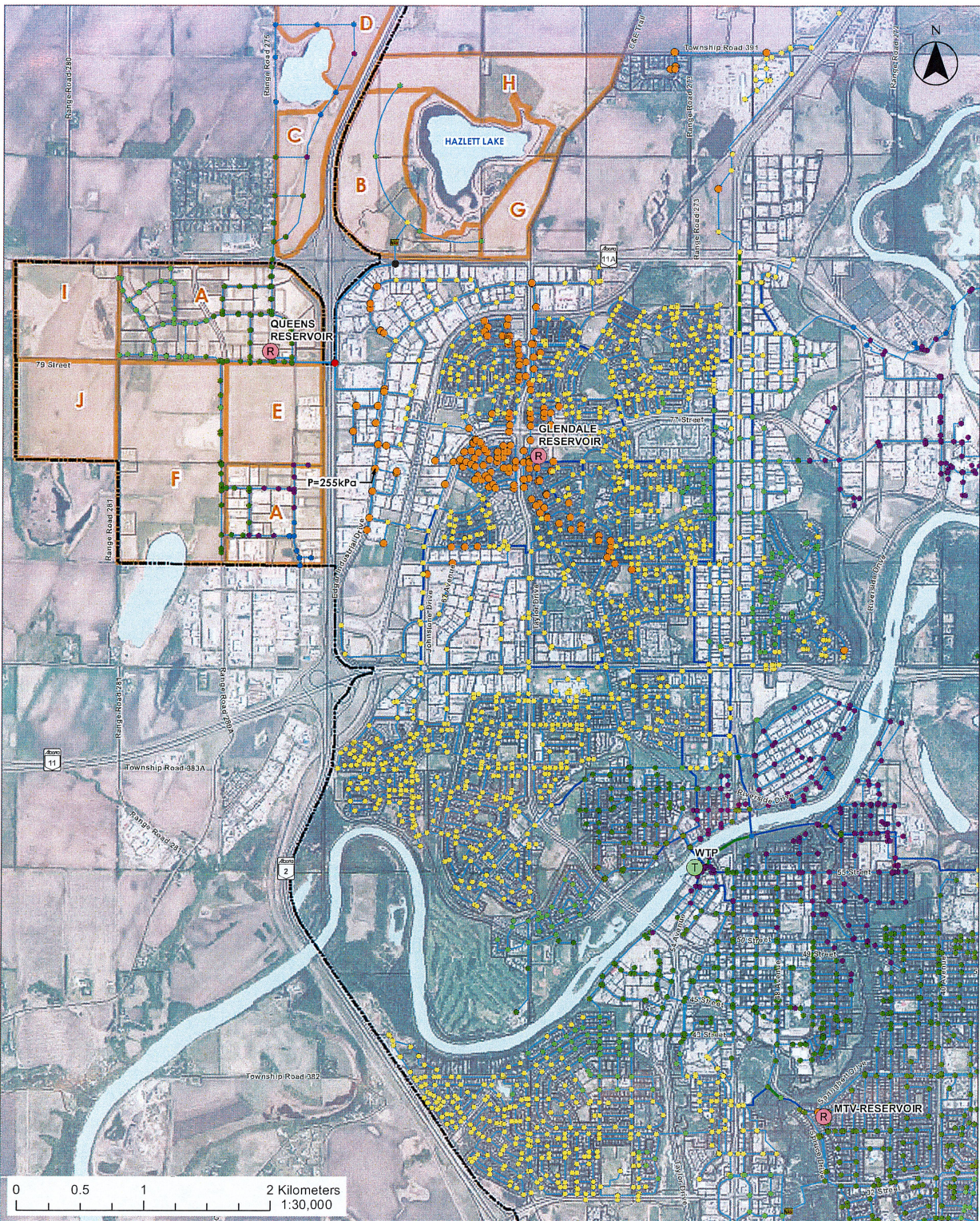
- Facilities**
- Booster Station
 - Reservoir
 - Water Treatment Plant
 - Pressure Reducing Valve
 - Red Deer City Limits
 - Growth Analysis
- Pressure**
- <250 kPa (36.3 psi)
 - 250 - 300 kPa (36.3 - 43.5 psi)
 - 300 - 400 kPa (43.6 - 58.0 psi)
 - 400 - 500 kPa (58.0 - 72.5 psi)
 - 500 - 600 kPa (72.5 - 87.0 psi)
 - 600 - 650 kPa (87.0 - 94.0 psi)
 - 650 - 700 kPa (94.0 - 101.5 psi)
 - 700 - 750 kPa (101.5 - 108.8 psi)
 - >750 kPa (108.8 psi)
- Velocity**
- >1.5 m/s
 - 1.25 - 1.5 m/s
 - 1.0 - 1.25 m/s
 - 0.5 - 1.0 m/s
 - 0.0 - 0.5 m/s

Completed by: AL
Date: 06/16/2023

Project No.: 11072084



Figure 6.39: Scenario 4 Pressures and Pipe Velocities in the MDD Filling - Relaxed Standard
City of Red Deer Water Model Update
City of Red Deer



Completed By: AL
Date: 6/22/2023

Project No.: 110170064



Figure 6.40: Scenario 4 Pressures and Pipe Velocities in the Night Filling - Relaxed Standard
City of Red Deer Water Model Update
City of Red Deer

Start Date: 6/16/2023 9:57:52 AM User: ashley
 %:\660-444901\work\pm1150\scen-110170064\Report\Facilities_1101_Maps\2023\3\Fig\40_sand_Pressure_Velocity_Final_Filling_RS.mxd