



## COLLISION STATISTICS 2019



## 2019 Red Deer Annual Motor Vehicle Collision Report

January 2026

Engineering Services  
Box 5008, 4914 – 48th Avenue  
Red Deer, AB T4N 3T4  
[engineering@reddeer.ca](mailto:engineering@reddeer.ca)

RCMP – GRC  
Red Deer City Detachment  
P.O. Bag 5033  
Red Deer, AB T4N 6A1  
[rcmp@reddeer.ca](mailto:rcmp@reddeer.ca)

## **LEGAL NOTE**

The City of Red Deer provides this information in good faith but gives no warranty, nor accepts liability, from any incorrect, incomplete or misleading information, or its use for any purpose.

## Table of Contents

LEGAL NOTE.....	i
Table of Contents .....	ii
List of Tables .....	iii
List of Figures.....	iv
Glossary of Terms .....	1
Introduction .....	2
Significance of Collisions Statistics .....	2
Overview of Collision Statistics .....	3
Public Roadway Collisions Summary .....	12
Roadway Summary .....	13
Day/Time Summary.....	14
Object Type Summary.....	15
Drivers Summary.....	16
Condition/Safety Summary.....	17
Pedestrian Collisions.....	18
Bicycle Collisions .....	19

## List of Tables

Table 1: Public Roadway Collisions Statistics 2017-2019 .....	6
Table 2 : Number of Collisions on Public Roadways in 2019 .....	12
Table 3: Fatalities and Injuries on Public Roadways in 2019 .....	12
Table 4: 2019 Collisions by Roadway Portion .....	13
Table 5: 2019 Public Roadway Collisions by Month and Road Surface Condition .....	13
Table 6: 2019 Public Roadway Collisions by Hour of Day and Day of Week .....	14
Table 7: Objects Involved in 2019 Motor Vehicle Collisions .....	15
Table 8: Age and Action of Drivers involved in 2019 Public Roadway Collisions .....	16
Table 9: Driver/Pedestrian Condition in 2019 Public Roadway Collisions .....	17
Table 10: Safety Equipment Used in 2019 Public Roadway Collisions .....	17
Table 11: Pedestrian Collisions Summary in 2019 Public Roadways Collisions .....	18
Table 12: Age and Action of Pedestrians involved in 2019 Public Roadways Collisions .....	18
Table 13: Bicyclist Collisions Summary in 2019 Public Roadways Collisions .....	19
Table 14: Age and Action of Bicyclists involved in 2019 Public Roadway Collisions.....	20

## List of Figures

Figure 1: Public Roadway Collisions Rate Trend 2017-2019 .....	7
Figure 2: Fatal and Injury Collisions Rate Trend on Public Roadways 2017-2019.....	7
Figure 3: Public Roadway Collisions Trend 2017-2019.....	8
Figure 4: Pedestrian and Bicyclist Collisions on Public Roadways 2017-2019 .....	8
Figure 5: 2019 Public Roadway Collisions by Month .....	9
Figure 6: 2019 Public Roadway Collisions by Day of Week .....	9
Figure 7: 2019 Public Roadway Collisions by Hour of Day (Weekdays)* .....	10
Figure 8: 2019 Public Roadway Collisions by Hour of Day (Weekends)* .....	10
Figure 9: 2019 Public Roadway Collisions in Statutory Holidays .....	11

## Glossary of Terms

<b>Collisions</b>	RCMP-reported collisions occurring on public roadways, alleys and public parking lots within the City of Red Deer's jurisdiction. Only those collisions are reported by public which result in a minimum of \$2,000 property damage or which result in injury or fatality. The collision must include at least one (1) motor vehicle. Non-vehicular collisions are not included in this report.
<b>Public Roadway Collisions</b>	Includes all collisions that occurred on any road or street within the City of Red Deer jurisdiction
<b>Parking Lots Collisions</b>	Includes all collisions that occurred on parking lots only within the City of Red Deer jurisdiction
<b>Injury</b>	Injuries noted by police on the collision report form. Injuries are classified as minor (scrapes, bruises, complaint of pain) or major (result in admission to hospital).
<b>Fatality</b>	On-scene fatalities, as well as those fatalities occurring within 30 days and which are related to the collision.
<b>Automobile</b>	Cars, trucks, and vans under 4,500 kilograms.
<b>Truck</b>	Tractor-trailers, trucks, and vans 4,500 kilograms and over.
<b>Intersection</b>	Defined as extending 10 metres past the legally defined limits of the outer crosswalk lines of an intersecting roadway.
<b>Midblock</b>	A section of roadway between two intersections.

## Introduction

This report presents summary data on collisions that occurred from January 1, 2019, to December 31, 2019. It also provides the historical collisions and general statistics of 2018 and 2017 for comparison purpose. The collisions data includes a variety of collision characteristics such as the type of collisions, age, driver condition and safety equipment used, etc.

This report was prepared based on the collision data received by Engineering Services Department from Alberta Transportation as of January 2026. Statistics in this report do not include collisions that occurred in public parking lots and unknown locations.

## Significance of Collisions Statistics

The collision data is used to develop, establish, and implement systems for managing road safety. There are many major road safety-related tasks which cannot be initiated without collision data, such as:

- Developing road safety projects and programs such as education, enforcement, and communication campaigns;
- Identifying and investigating hazardous road safety situations and establishing countermeasures and priorities to correct the identified hazards or potential hazards;
- Identifying safety needs of special user groups, such as older drivers, pedestrians, bicyclists, motorcyclists, and commercial vehicles;
- Facilitating budget planning; and
- Determining collision reduction targets and hence developing road safety action plan targets.

## Overview of Collision Statistics

**Public Roadway Collisions:** In 2019, there were 2236 reported motor vehicle collisions on public roadways in Red Deer. This figure is higher than 2018 which had 2,161 reported collisions on public roadways.

While 2019 had a population increase of 1.2%, collisions per 1,000 populations remained at 22.

In 2019, public roadway collisions per 1,000 registered vehicles increased from 26 to 27.

In 2019, public roadway collisions (Intersection, Midblock, and Alley) have increased by 3.5 percent compared to the 2018 figure.

In 2019, approximately 61.9 percent of the public roadway collisions occurred at intersections which is lower than the percentage of public roadway collisions that occurred at intersections in 2018 (62.9 percent) and lower than 2017 (62.8 percent).

**Injuries:** In 2019 there were a total of 219 reported minor and major injuries; this is an approximate increase of 21.0 percent over the 181 injuries reported in 2018. The 181 reported injuries in 2018 is an approximate increase of 15.3 percent when compared to the 157 injuries reported in 2017.

**Fatalities:** There were two road fatalities in 2019, compared to three in 2018 and one in 2017.

**Pedestrians:** In 2019 there were 36 reported pedestrian collisions resulting in 30 injuries. In 2018 there were 28 reported pedestrian collisions resulting in 22 injuries. In 2017 there were 19 reported pedestrian collisions resulting in 16 injuries. Of the 36 pedestrian collisions in 2019, 25 pedestrians were recorded as crossing the road with the right of way, and 6 pedestrians were recorded as crossing the road without the right of way.

**Bicyclists:** In 2019 there were 21 reported bicycle collisions resulting in 16 injuries. In 2018 there were 14 reported bicycle collisions resulting in 8 injuries. In 2017 there were 15 reported bicycle collisions resulting in 11 injuries.

**Month:** In 2019, February was the leading month with 12.2 percent (273 total) of public roadway collisions; while September experienced the least number with 5.5 percent (122 total). See Figure 5.

**Day:** In 2019, Fridays had the highest percentage of collisions with 18.8 percent, while Sunday was the lowest with 8.9 percent. See Figure 6.

**Hour:** The hour from 1701 to 1800 accounted for 7.6 percent of all public roadway collisions, while each hour from 0001 to 0600 accounted for less than 1 percent. The periods of time with the highest number of collisions were from 1701 to 1800 on weekdays and 1301 to 1400 on weekends. See Figure 7 and Figure 8.

**Holiday:** New Year's Day and Easter Monday recorded the highest total number of collisions. See Figure 9.

**Types of Collisions:** The most common collision type was "Rear-End," and "Struck Object" was the second most common type of all public roadway collisions. The most frequently recorded improper driving action in collisions occurring on public roadways in 2019 was "Followed Too Closely". See Table 4.

Types of Collisions	2018	2019
Rear-End	755	726
Percentage of all public roadway collisions	34.9%	32.5%
Struck Object	393	395
Percentage of all public roadway collisions	18.2%	17.7%

**Road Surface:** 37.1 percent of collisions occurred when the road surface was covered with slush/snow/ice" and 53.7 percent of collisions occurred when the road surface was dry.

**Age:** The age group with the highest number of collisions was "25-34", second highest age group involved in a collision was "35-44" The same age group accounted for the highest percentage of collisions in 2018. See Table 8.

Age Group	2018	2019
25-34	811	808
Percentage of all public roadway collisions	17.5%	17.0%
35-44	761	784
Percentage of all public roadway collisions	16.5%	16.4%

**Alcohol:** In 2019, 27 drivers/pedestrians involved in collisions were impaired by alcohol while 29 drivers/pedestrians involved in collisions were impaired by alcohol in 2018. There were 5 injury collisions related to alcohol in 2019.

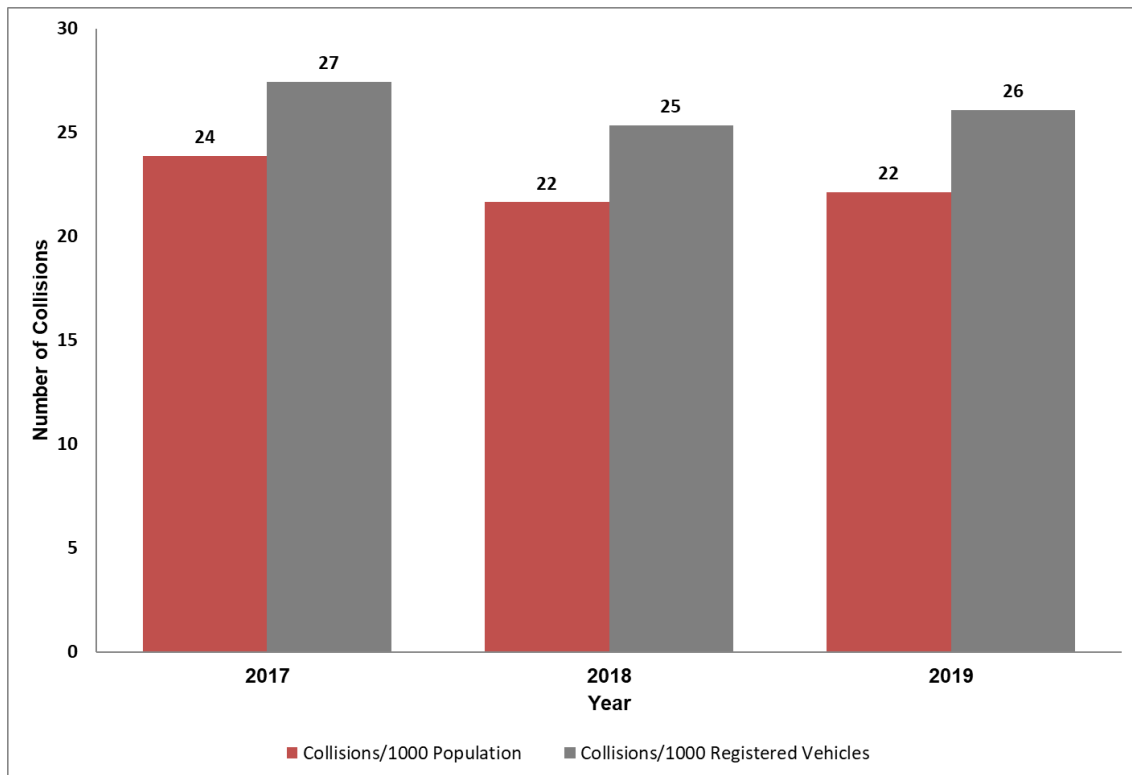
**Restraint Usage:** In 2019, there were 24 drivers and 4 passengers involved in public roadway collisions recorded without wearing restraining devices which resulted in 4 injuries.

**Motor Vehicle Types:** Mini-Van/MPV/SUVs were involved in 33.3 percent of public roadway collisions in 2019 while passenger cars represented 30.9 percent and pick-up/van 22.2 percent.

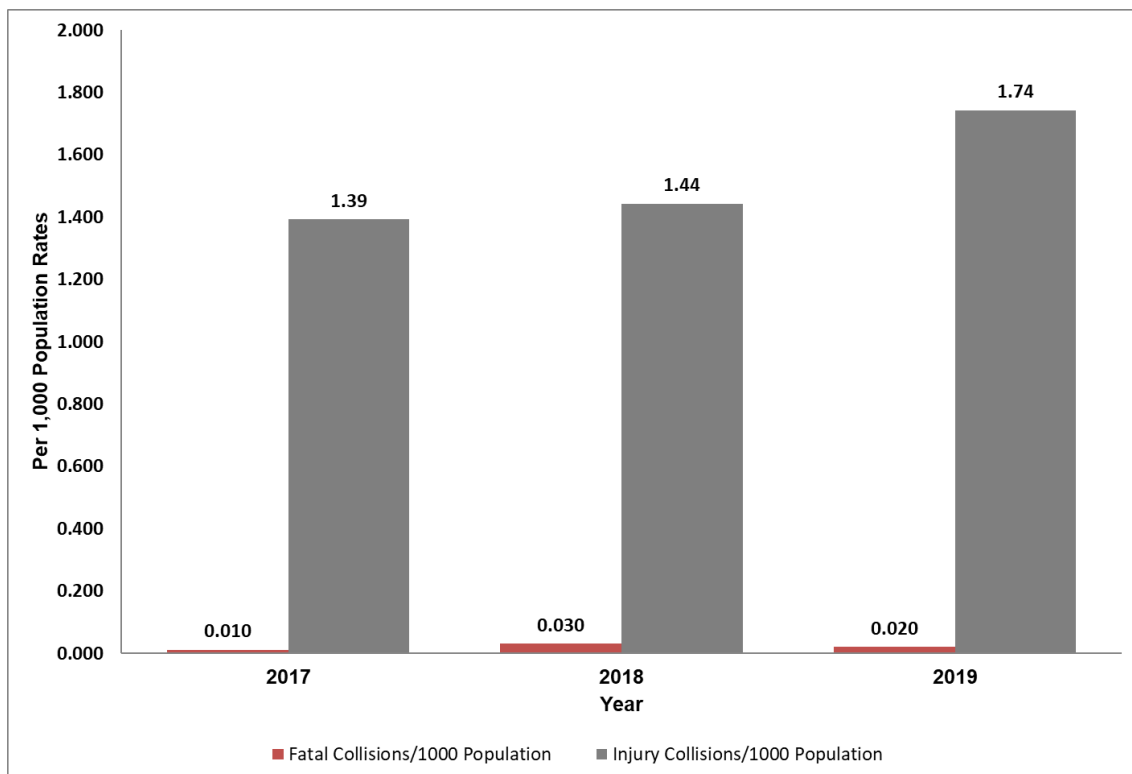
Parking lots and Unknown locations Collisions: In 2019, there were 1077 reported collisions in parking lots and unknown locations. In 2018 and 2017, the number of reported collisions on parking lots and unknown locations were 1116 and 1215 collisions.

**Table 1: Public Roadway Collisions Statistics 2017-2019**

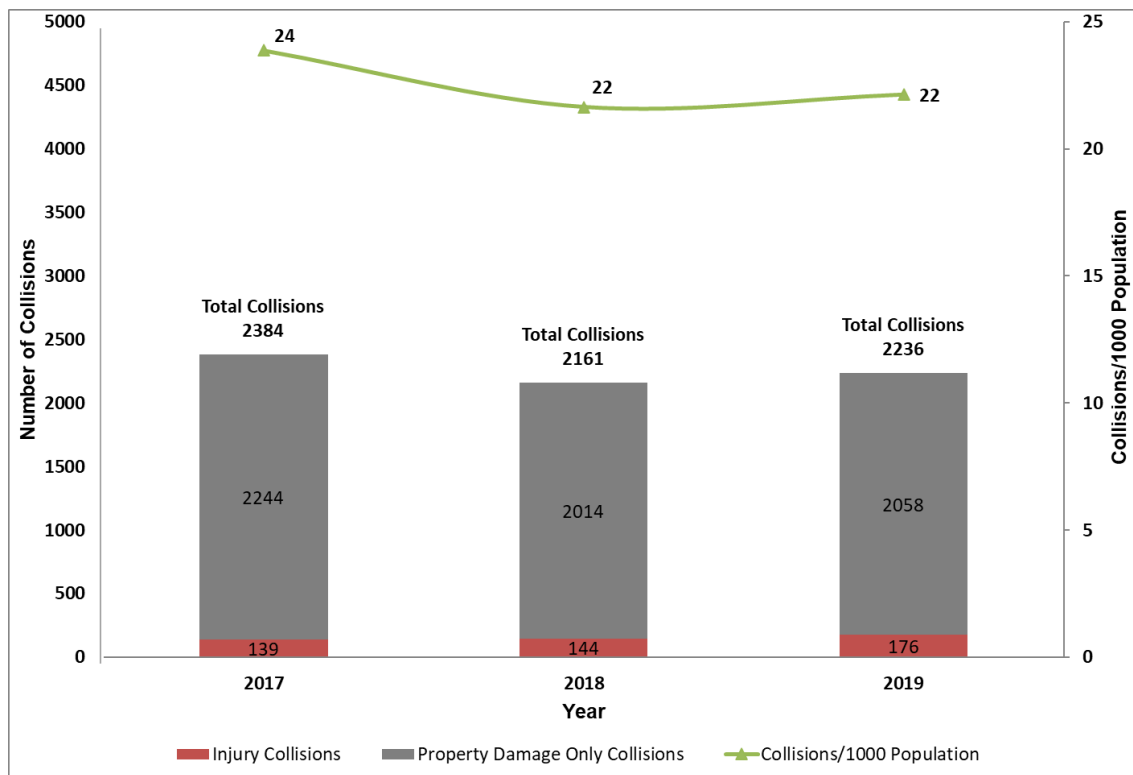
Statistics	2017	2018	2019
Public Roadways Collisions	2384	2161	2236
Collisions in Intersection	1496	1360	1384
Collisions in Midblock	803	729	785
Percentage Increase / Decrease	+11.1%	-9.4%	+3.5%
Fatal Collisions	1	3	2
Injury Collisions	139	144	176
Fatal and Injury Collisions	140	147	178
Property Damage Only Collisions	2244	2014	2058
Number of Injuries	157	181	219
Number of Fatalities	1	3	2
Pedestrian Collisions	19	28	36
Number of Pedestrian Injuries	16	22	30
Number of Pedestrian Fatalities	0	1	0
Bicycle Collisions	15	14	21
Number of Bicyclists Injuries	11	8	16
Number of Bicyclists Fatalities	0	0	0
Red Deer Population	99,832	99,832	101,992
Motor vehicles Registered in Red Deer Civic Address	86,902	85,220	85,721
Public Roadway Collisions/1000 Population	24	22	22
Public Roadway Collisions/1000 Registered Vehicles in Red Deer Civic Address	27	25	26



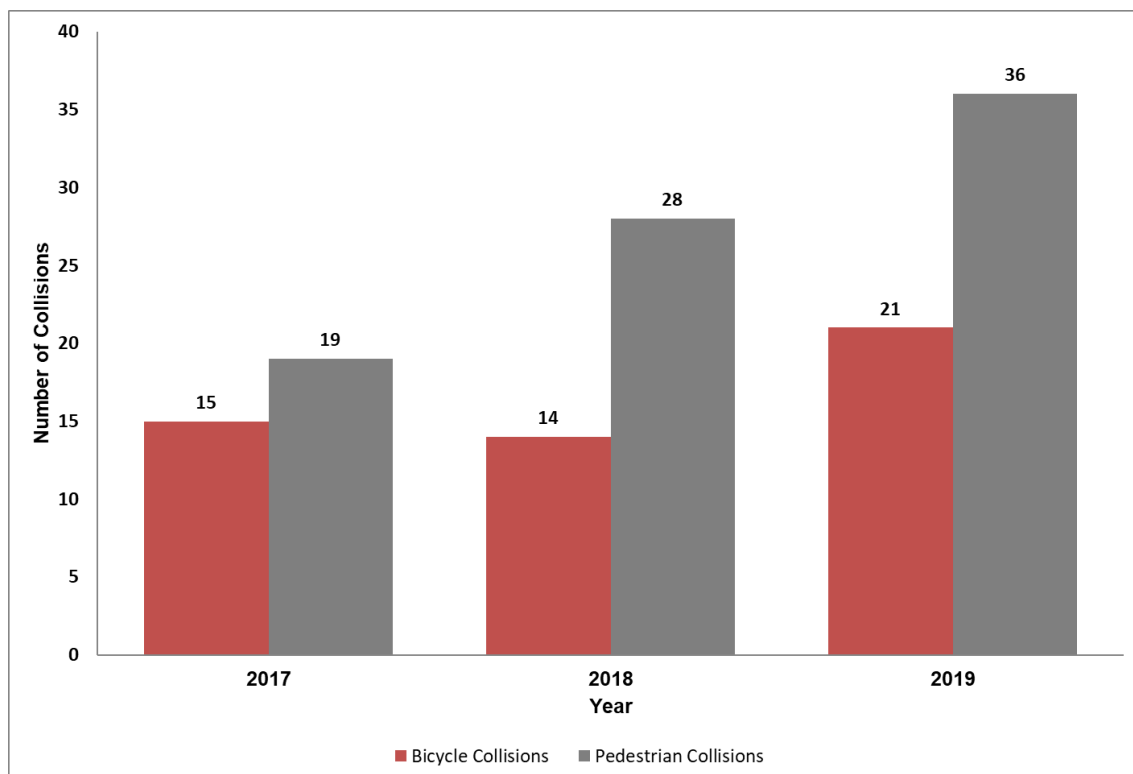
**Figure 1: Public Roadway Collisions Rate Trend 2017-2019**



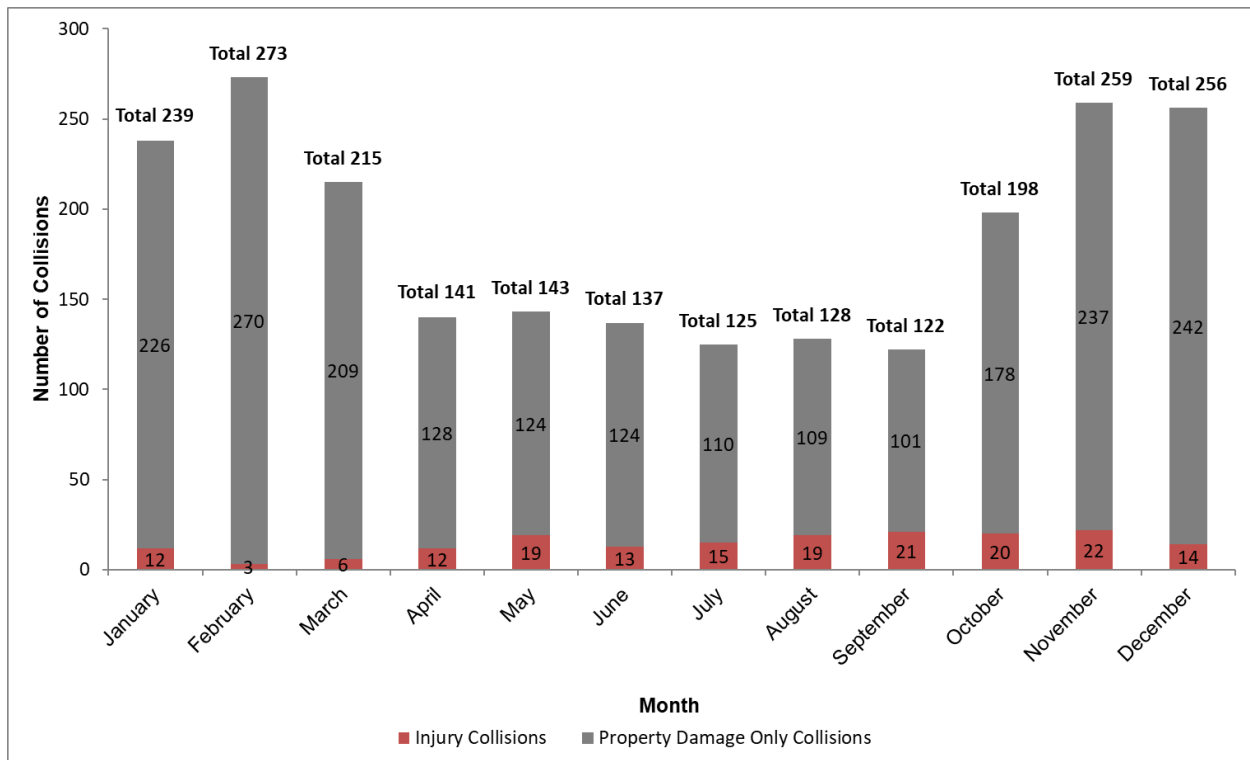
**Figure 2: Fatal and Injury Collisions Rate Trend on Public Roadways 2017-2019**



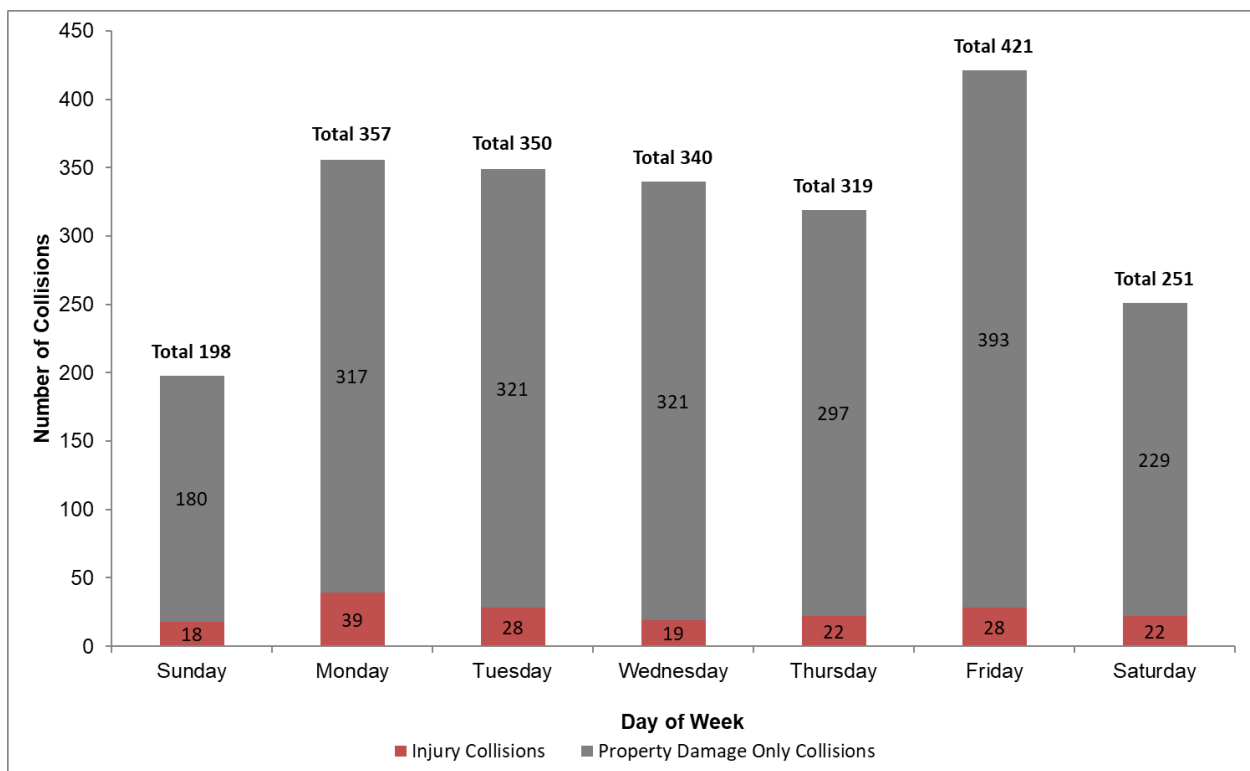
**Figure 3: Public Roadway Collisions Trend 2017-2019**



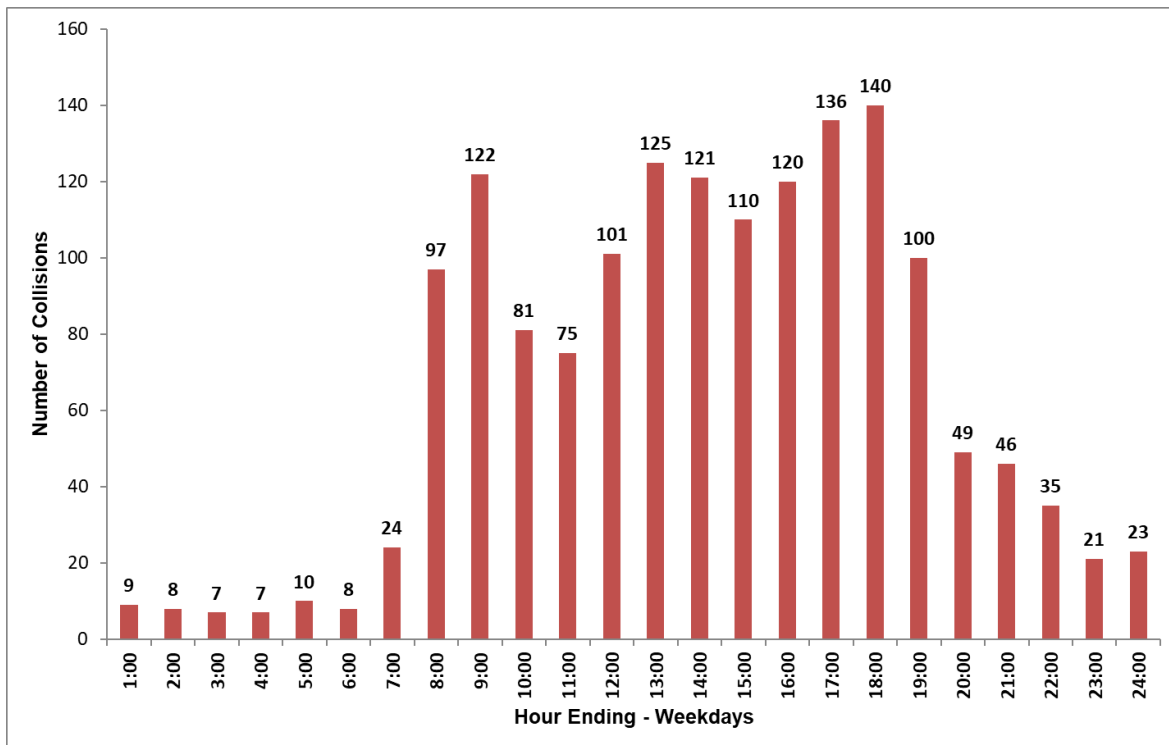
**Figure 4: Pedestrian and Bicyclist Collisions on Public Roadways 2017-2019**



**Figure 5: 2019 Public Roadway Collisions by Month**

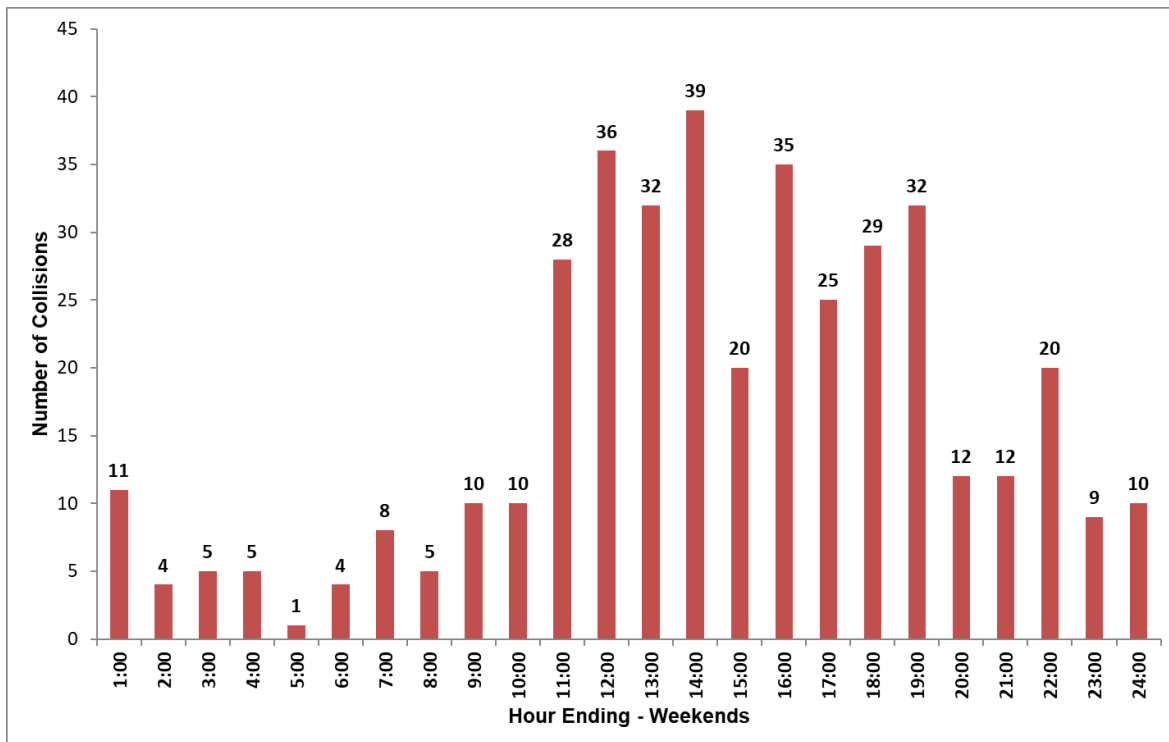


**Figure 6: 2019 Public Roadway Collisions by Day of Week**



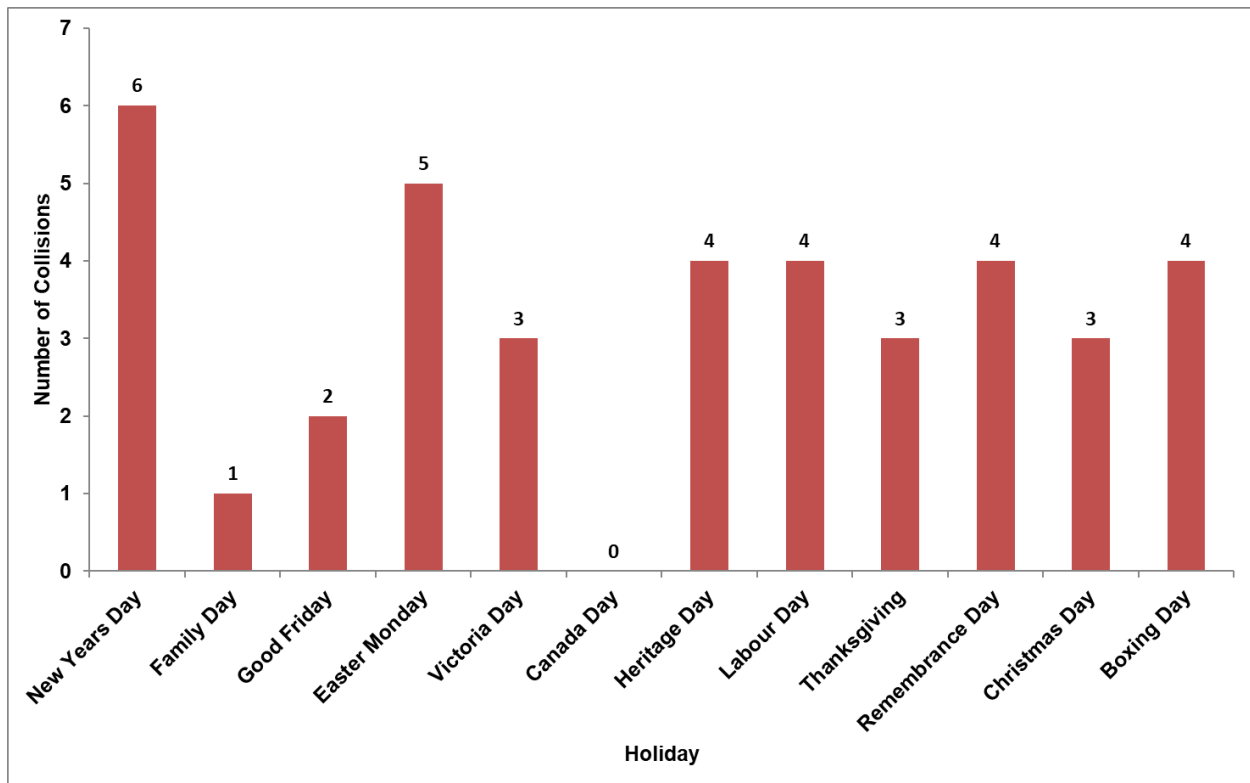
**Figure 7: 2019 Public Roadway Collisions by Hour of Day (Weekdays)\***

\* 212 collisions occurred where time was unknown, was not included in the diagram



**Figure 8: 2019 Public Roadway Collisions by Hour of Day (Weekends)\***

\* 47 collisions occurred where time was unknown, was not included in the diagram



**Figure 9: 2019 Public Roadway Collisions in Statutory Holidays**

## Public Roadway Collisions Summary

### 2019/01/01 TO 2019/12/31

---

**Table 2 : Number of Collisions on Public Roadways in 2019**

Statistics	2019
Motor Vehicle Collisions	2236
Motor Vehicles Involved	4359
Collisions Causing Fatalities	2
Fatalities Resulting	2
Collisions Causing Injury	176
Injuries Resulting	219
Property Damage Only Collisions	2058

**Table 3: Fatalities and Injuries on Public Roadways in 2019**

Travel Mode	Minor Injuries	Major Injuries	Fatal	Total
Vehicle Driver	105	17	2	124
Vehicle Passenger	30	4	0	34
Motorcyclist	7	4	0	11
Bicyclist	13	3	0	16
Pedestrian	22	8	0	30
Other, Unknown	4	2	0	6
<b>Total</b>	<b>181</b>	<b>38</b>	<b>2</b>	<b>221</b>

## Roadway Summary

### 2019/01/01 TO 2019/12/31

**Table 4: 2019 Collisions by Roadway Portion**

Cause	Intersection	Midblock	Alley	At/Near Rail road crossing	Unknown	Total
Struck Object	108	270	11	0	6	395
Off Road Left	7	16	0	0	0	23
Right Angle	246	24	6	0	3	279
Passing-Left Turn	22	12	0	0	0	34
Left Turn- Across Path	156	8	1	0	0	165
Sideswipe - Opposite Direction	20	21	2	0	1	44
Other	5	62	2	0	21	90
Rear End	623	100	0	1	2	726
Off Road Right	13	14	0	0	0	27
Head On	4	7	0	0	0	11
Passing-Right Turn	10	5	0	0	0	15
Sideswipe - Same Direction	147	135	1	0	4	287
Backing	23	111	5	0	1	140
<b>Total</b>	<b>1384</b>	<b>785</b>	<b>28</b>	<b>1</b>	<b>38</b>	<b>2236</b>

**Table 5: 2019 Public Roadway Collisions by Month and Road Surface Condition**

Month	Dry	Wet	Slush/Snow/Ice	Loose Surface Material	Other/ Unknown	Total
January	88	13	133	0	5	239
February	46	3	218	0	6	273
March	102	7	99	0	7	215
April	128	8	2	1	2	141
May	128	10	3	1	1	143
June	111	23	0	0	3	137
July	106	14	0	0	5	125
August	112	6	0	0	10	128
September	108	8	1	0	5	122
October	162	5	26	0	5	198
November	76	24	144	1	14	259
December	34	13	203	1	5	256
<b>Total</b>	<b>1201</b>	<b>134</b>	<b>829</b>	<b>4</b>	<b>68</b>	<b>2236</b>

## Day/Time Summary

### 2019/01/01 TO 2019/12/31

**Table 6: 2019 Public Roadway Collisions by Hour of Day and Day of Week**

Hour Ending	Sun	Mon	Tue	Wed	Thu	Fri	Sat	Total
1:00	3	1	3	1	0	4	8	20
2:00	1	3	0	1	0	4	3	12
3:00	1	2	2	0	2	1	4	12
4:00	4	0	1	2	3	1	1	12
5:00	1	2	4	3	0	1	0	11
6:00	3	2	0	2	2	2	1	12
7:00	3	8	5	6	3	2	5	32
8:00	2	32	14	16	20	15	3	102
9:00	3	27	29	29	19	18	7	132
10:00	3	19	13	21	8	20	7	91
11:00	14	12	16	14	11	22	14	103
12:00	12	20	18	20	17	26	24	137
13:00	12	19	28	20	25	33	20	157
14:00	23	27	19	26	20	29	16	160
15:00	11	28	25	13	20	24	9	130
16:00	19	17	26	24	25	28	16	155
17:00	14	24	27	24	26	35	11	161
18:00	15	24	34	22	27	33	14	169
19:00	9	20	20	24	17	19	23	132
20:00	4	11	5	9	10	14	8	61
21:00	8	10	3	15	7	11	4	58
22:00	11	9	6	3	8	9	9	55
23:00	4	3	0	4	5	9	5	30
24:00	3	2	6	2	8	5	7	33
Unknown	15	35	46	39	36	56	32	259
<b>Total</b>	<b>198</b>	<b>357</b>	<b>350</b>	<b>340</b>	<b>319</b>	<b>421</b>	<b>251</b>	<b>2236</b>

## Object Type Summary

### 2019/01/01 TO 2019/12/31

**Table 7: Objects Involved in 2019 Motor Vehicle Collisions**

Object Type	# Objects	Percentage
Passenger Car	1697	30.91%
Pick-Up/Van <4500kg	1218	22.19%
Mini-Van/MPV/SUV	1829	33.32%
Truck >4500kg	137	2.50%
Truck Tractor	29	0.53%
Motorcycle/Scooter	19	0.35%
Pedestrian	37	0.67%
Bicycle	21	0.38%
School Bus	17	0.31%
Transit Bus	14	0.26%
Intercity Bus	1	0.02%
Other Bus	1	0.02%
Fixed Object	145	2.64%
Train	0	0.00%
Animal	46	0.84%
Motorhome	9	0.16%
Construction Equipment	2	0.04%
Emergency Vehicle	4	0.07%
Farm Equipment	0	0.00%
Off-Highway Vehicle	1	0.02%
Motorized Snow Vehicle	0	0.00%
Moped	0	0.00%
Unknown	263	4.79%
<b>Total</b>	<b>5490</b>	<b>100.0%</b>

## Drivers Summary

### 2019/01/01 TO 2019/12/31

**Table 8: Age and Action of Drivers Involved in 2019 Public Roadway Collisions**

Driver Action	10-14	15-19	20-24	25-34	35-44	45-54	55-64	65-74	75+	Unknown	Total	% of Action
Driving Properly	0	116	156	334	383	296	284	128	62	12	1771	37.2%
Stop Sign Violation	0	1	9	15	9	4	3	8	2	3	54	1.1%
Yield Sign Violation	0	5	3	10	5	7	6	1	2	1	40	0.8%
Fail To Yield Right of way at Uncontrolled Intersection	0	1	1	5	1	5	4	5	1	0	23	0.5%
Fail To Yield Right of way to Pedestrian	0	0	1	2	2	1	6	3	2	3	20	0.4%
Followed Too Closely	0	62	64	151	121	73	68	33	12	9	593	12.4%
Parked Vehicle	0	0	0	0	0	0	0	0	0	0	0	0.0%
Backed Unsafely	1	8	13	18	31	24	24	17	8	4	148	3.1%
Left Turn Across Path	0	19	22	28	20	22	17	9	10	5	152	3.2%
Improper Lane Change	0	11	9	29	28	23	23	14	13	14	164	3.4%
Disobey Traffic Signal	0	11	19	20	25	9	16	17	1	5	123	2.6%
Ran Off Road	0	6	9	14	11	5	10	1	4	10	70	1.5%
Improper Turn	0	10	16	12	19	11	10	5	6	5	94	2.0%
Left of Centre	0	1	2	3	5	0	1	0	0	0	12	0.3%
Improper Passing	0	1	1	2	7	2	3	0	0	3	19	0.4%
Other, Unknown	86	151	98	165	117	79	74	46	46	621	1483	31.1%
<b>Total</b>	<b>87</b>	<b>403</b>	<b>423</b>	<b>808</b>	<b>784</b>	<b>561</b>	<b>549</b>	<b>287</b>	<b>162</b>	<b>702</b>	<b>4766</b>	<b>100%</b>
% of Age	1.8%	8.5%	8.9%	17.0%	16.4%	11.8%	11.5%	6.0%	3.4%	14.7%	100%	

## Condition/Safety Summary

### 2019/01/01 TO 2019/12/31

**Table 9: Driver/Pedestrian Condition in 2019 Public Roadway Collisions**

Driver/Pedestrian Condition	Drivers/Pedestrians #	Fatal Collisions	Injury Collisions	Property Damage Collisions
Had Been Drinking	14	0	2	12
Impaired by Alcohol	27	0	3	24
Impaired by Drugs	0	0	0	0
Fatigued/Asleep	7	0	2	5
Medical Defect	13	1	5	7
Unsafe Speed	212	1	44	167

**Table 10: Safety Equipment Used in 2019 Public Roadway Collisions**

Safety Equipment	Drivers #	Collision Severity				Passenger #	Collision Severity			
		None	Minor	Major	Fatal		None	Minor	Major	Fatal
Lap belt only	31	29	1	1	0	7	7	0	0	0
Lap/Shoulder belt assembly	3755	3653	87	14	1	637	613	21	3	0
Shoulder belt only	36	34	2	0	0	8	7	1	0	0
Lap/Shoulder with Air Bag	144	114	27	3	0	19	14	4	1	0
Airbag	7	5	2	0	0	0	0	0	0	0
None	24	21	3	0	0	4	0	1	0	0
Other/Specify	2	2	0	0	0	137	134	3	0	0
Unknown	620	605	11	3	1	10	10	0	0	0

## Pedestrian Collisions

### 2019/01/01 TO 2019/12/31

**Table 11: Pedestrian Collisions Summary in 2019 Public Roadways Collisions**

Statistics	2019
Collisions Involving Pedestrian	36
Pedestrians Involved	37
Collisions resulting in Pedestrian Injury or Fatality	30
Pedestrian Injuries	30
Pedestrian Fatalities	0

**Table 12: Age and Action of Pedestrians involved in 2019 Public Roadways Collisions**

Pedestrian Action	1-4	5-9	10-14	15-19	20-24	25-34	35-44	45-54	55-64	65-74	75+	Unk.	Total	% of Action
Crossing with Right of Way	0	0	1	3	0	6	2	3	6	3	0	1	25	67.6%
Crossing without Right of Way	0	0	2	1	0	0	0	1	1	0	0	1	6	16.2%
Walking/Working on Roadway	0	0	0	0	0	0	1	0	1	0	0	0	2	5.4%
Getting on/off vehicle	0	0	0	0	0	1	0	0	0	0	0	0	1	2.7%
Other, Unknown	0	0	0	0	0	0	0	0	0	0	0	0	3	8.1%
<b>Total</b>	<b>0</b>	<b>0</b>	<b>3</b>	<b>4</b>	<b>0</b>	<b>7</b>	<b>3</b>	<b>4</b>	<b>8</b>	<b>3</b>	<b>0</b>	<b>2</b>	<b>37</b>	<b>100%</b>
% of Age	0.0%	0.0%	8.1%	10.8%	0.0%	18.9%	8.1%	10.8%	21.6%	8.1%	0.0%	5.4%	100%	

## Bicycle Collisions

### 2019/01/01 TO 2019/12/31

---

**Table 13: Bicyclist Collisions Summary in 2019 Public Roadways Collisions**

Statistics	2019
Bicyclist Collisions	21
Bicyclists Involved	21
Collisions resulting in Bicyclist Injury or Fatality	16
Bicyclist Injuries	16
Bicyclist Fatalities	0

**Table 14: Age and Action of Bicyclists involved in 2019 Public Roadway Collisions**

Bicyclist Action	1-4	5-9	10-14	15-19	20-24	25-34	35-44	45-54	55-64	65-74	75+	Unknown	Total	% of Action
Driving Properly	0	0	0	1	1	2	0	0	0	0	0	0	4	19.0%
Stop Sign Violation	0	0	0	1	0	0	0	0	0	0	0	0	1	4.8%
Yield Sign Violation	0	0	0	0	0	0	0	0	0	0	0	0	0	0.0%
Fail To Yield Right of Way at Uncontrolled Intersection	0	0	0	0	0	1	0	1	0	0	0	0	2	9.5%
Fail To Yield Right of Way to Pedestrian	0	0	0	0	0	0	0	0	0	0	0	0	0	0.0%
Followed Too Closely	0	0	0	0	0	0	0	0	0	0	0	0	0	0.0%
Parked Vehicle	0	0	0	0	0	0	0	0	0	0	0	0	0	0.0%
Backed Unsafely	0	1	0	0	0	0	0	0	0	0	0	0	1	4.8%
Left Turn Across Path	0	0	0	0	0	0	0	0	0	0	0	0	0	0.0%
Improper Lane Change	0	0	0	0	0	0	0	0	0	0	0	0	0	0.0%
Disobey Traffic Signal	0	0	1	0	0	0	0	0	0	0	0	0	1	4.8%
Ran Off Road	0	0	0	0	0	0	0	0	0	0	0	0	0	0.0%
Improper Passing	0	0	0	0	0	0	0	0	0	0	0	0	0	0.0%
Left of Centre	0	0	0	0	0	0	0	0	0	0	0	0	0	0.0%
Improper Turn	0	0	0	0	0	0	0	0	0	0	0	0	0	0.0%
Other, Unknown	0	0	3	0	1	3	1	2	0	0	1	1	12	57.1%
<b>Total</b>	<b>0</b>	<b>1</b>	<b>4</b>	<b>2</b>	<b>2</b>	<b>6</b>	<b>1</b>	<b>3</b>	<b>0</b>	<b>0</b>	<b>1</b>	<b>1</b>	<b>21</b>	<b>100%</b>
% of Age	0.0%	4.8%	19.0%	9.5%	9.5%	28.6%	4.8%	14.3%	0.0%	0.0%	4.8%	4.8%	100.0%	