



COLLISION STATISTICS 2022



2022 Red Deer Annual Motor Vehicle Collision Report

January 2026

Engineering Services
Box 5008, 4914 – 48th Avenue
Red Deer, AB T4N 3T4
engineering@reddeer.ca

RCMP – GRC
Red Deer City Detachment
P.O. Bag 5033
Red Deer, AB T4N 6A1
rcmp@reddeer.ca

LEGAL NOTE

The City of Red Deer provides this information in good faith but gives no warranty, nor accepts liability, from any incorrect, incomplete or misleading information, or its use for any purpose.

Table of Contents

LEGAL NOTE.....	i
Table of Contents	ii
List of Tables	iii
List of Figures.....	iv
Glossary of Terms	1
Introduction	2
Significance of Collisions Statistics	2
Overview of Collision Statistics	3
Public Roadway Collisions Summary	12
Roadway Summary	13
Day/Time Summary.....	14
Object Type Summary.....	15
Drivers Summary.....	16
Condition/Safety Summary.....	17
Pedestrian Collisions.....	18
Bicycle Collisions	19

List of Tables

Table 1: Public Roadway Collisions Statistics 2020-2022	6
Table 2 : Number of Collisions on Public Roadways in 2022	12
Table 3: Fatalities and Injuries on Public Roadways in 2022	12
Table 4: 2022 Collisions by Roadway Portion	13
Table 5: 2022 Public Roadway Collisions by Month and Road Surface Condition	13
Table 6: 2022 Public Roadway Collisions by Hour of Day and Day of Week	14
Table 7: Objects Involved in 2022 Motor Vehicle Collisions	15
Table 8: Age and Action of Drivers involved in 2022 Public Roadway Collisions	16
Table 9: Driver/Pedestrian Condition in 2022 Public Roadway Collisions	17
Table 10: Safety Equipment Used in 2022 Public Roadway Collisions	17
Table 11: Pedestrian Collisions Summary in 2022 Public Roadways Collisions	18
Table 12: Age and Action of Pedestrians involved in 2022 Public Roadways Collisions	18
Table 13: Bicyclist Collisions Summary in 2022 Public Roadways Collisions	19
Table 14: Age and Action of Bicyclists involved in 2022 Public Roadway Collisions.....	20

List of Figures

Figure 1: Public Roadway Collisions Rate Trend 2020-2022	7
Figure 2: Fatal and Injury Collisions Rate Trend on Public Roadways 2020-2022	7
Figure 3: Public Roadway Collisions Trend 2020-2022	8
Figure 4: Pedestrian and Bicyclist Collisions on Public Roadways 2020-2022	8
Figure 5: 2022 Public Roadway Collisions by Month	9
Figure 6: 2022 Public Roadway Collisions by Day of Week	9
Figure 7: 2022 Public Roadway Collisions by Hour of Day (Weekdays)*	10
Figure 8: 2022 Public Roadway Collisions by Hour of Day (Weekends)*	10
Figure 9: 2022 Public Roadway Collisions in Statutory Holidays	11

Glossary of Terms

Collisions	RCMP-reported collisions occurring on public roadways, alleys and public parking lots within the City of Red Deer's jurisdiction. Only those collisions are reported by public which result in a minimum of \$2,000 property damage or which result in injury or fatality. The collision must include at least one (1) motor vehicle. Non-vehicular collisions are not included in this report.
Public Roadway Collisions	Includes all collisions that occurred on any road or street within the City of Red Deer jurisdiction
Parking Lots Collisions	Includes all collisions that occurred on parking lots only within the City of Red Deer jurisdiction
Injury	Injuries noted by police on the collision report form. Injuries are classified as minor (scrapes, bruises, complaint of pain) or major (result in admission to hospital).
Fatality	On-scene fatalities, as well as those fatalities occurring within 30 days and which are related to the collision.
Automobile	Cars, trucks, and vans under 4,500 kilograms.
Truck	Tractor-trailers, trucks, and vans 4,500 kilograms and over.
Intersection	Defined as extending 10 metres past the legally defined limits of the outer crosswalk lines of an intersecting roadway.
Midblock	A section of roadway between two intersections.

Introduction

This report presents summary data on collisions that occurred from January 1, 2022, to December 31, 2022. It also provides the historical collisions and general statistics of 2021 and 2020 for comparison purpose. The collisions data includes a variety of collision characteristics such as the type of collisions, age, driver condition and safety equipment used, etc.

This report was prepared based on the collision data received by Engineering Services Department from Alberta Transportation as of January 2026. Statistics in this report do not include collisions that occurred in public parking lots and unknown locations.

Significance of Collisions Statistics

The collision data is used to develop, establish, and implement systems for managing road safety. There are many major road safety-related tasks which cannot be initiated without collision data, such as:

- Developing road safety projects and programs such as education, enforcement, and communication campaigns;
- Identifying and investigating hazardous road safety situations and establishing counter-measures and priorities to correct the identified hazards or potential hazards;
- Identifying safety needs of special user groups, such as older drivers, pedestrians, bicyclists, motorcyclists, and commercial vehicles;
- Facilitating budget planning; and
- Determining collision reduction targets and hence developing road safety action plan targets.

Overview of Collision Statistics

Public Roadway Collisions: In 2022, there were 1927 reported motor vehicle collisions on public roadways in Red Deer. This figure is higher than 2021 which had 1,444 reported collisions on public roadways.

While 2022 considered the same population as 2021 (no census was done in 2022), collisions per 1,000 populations increased from 14 to 19.

In 2022, public roadway collisions per 1,000 registered vehicles also increased from 17 to 24.

In 2022, public roadway collisions (Intersection, Midblock, and Alley) have increased by 33.4 percent compared to the 2021 figure.

In 2022, approximately 69.3 percent of the public roadway collisions occurred at intersections which is higher than the percentage of public roadway collisions that occurred at intersections in 2021 (65.7 percent) and 2020 (65.1 percent).

Injuries: In 2022 there were a total of 167 reported minor and major injuries; this is an approximate increase of 21.9 percent over the 137 injuries reported in 2021. The 137 reported injuries in 2021 is an approximate decrease of 12.7 percent when compared to the 157 injuries reported in 2020.

Fatalities: There were no road fatalities in 2022, compared to two in 2021 and one in 2020.

Pedestrians: In 2022 there were 22 reported pedestrian collisions resulting in 20 injuries. In 2021 there were 21 pedestrian collisions resulting in 21 injuries and one fatality. In 2020 there were 17 reported pedestrian collisions resulting in 14 injuries. Of the 22 pedestrian collisions in 2022, 13 pedestrians were recorded as crossing the road with the right of way, and 1 pedestrian was recorded as crossing the road without the right of way.

Bicyclists: In 2022 there were 20 reported bicycle collisions resulting in 17 injuries. In 2021 there were 18 reported bicycle collisions resulting in 16 injuries. In 2020 there were 16 reported bicycle collisions resulting in 13 injuries.

Month: In 2022, December was the leading month with 16.8 percent (323 total) of public roadway collisions; while May experienced the least number with 4.7 percent (91 total). See Figure 5.

Day: In 2022, Thursdays had the highest percentage of collisions with 18.5 percent, followed by Wednesdays at 18.4 percent, while Sunday was the lowest with 7.9 percent. See Figure 6.

Hour: The hour from 1601 to 1700 accounted for 9.9 percent of all public roadway collisions, while each hour from 0001 to 0600 accounted for less than 1 percent. The periods of time with the highest number of collisions were from 1601 to 1700 on weekdays and 1601 to 1700 and 1701 to 1800 on weekends. See Figure 7 and Figure 8.

Holiday: Boxing Day and Family Day recorded the highest total number of collisions. See Figure 9.

Types of Collisions: The most common collision type was “Rear-End” and “Struck Object” was the second most common type of all public roadway collisions. The most frequently recorded improper driving action in collisions occurring on public roadways in 2022 was “Followed Too Closely”. See Table 4.

Types of Collisions	2021	2022
Rear-End	455	609
Percentage of all public roadway collisions	31.5%	31.6%
Struck Object	298	387
Percentage of all public roadway collisions	20.6%	20.1%

Road Surface: 47.7 percent of collisions occurred when the road surface was dry and 45.5 percent of collisions occurred when the road surface was covered with slush/snow/ice.

Age: The age group with the highest number of collisions was “35-44”, second highest age group involved in a collision was “25-34”. The same age group accounted for the highest percentage of collisions in 2021. See Table 8.

Age Group	2021	2022
35-44	469	621
Percentage of all public roadway collisions	17.4%	16.0%
25-34	431	582
Percentage of all public roadway collisions	16.0%	15.0%

Alcohol: In 2022, 23 drivers/pedestrians involved in collisions were impaired by alcohol while 20 drivers/pedestrians involved in collisions were impaired by alcohol in 2021. There were 7 injury collisions related to alcohol in 2022.

Restraint Usage: In 2022, there were 77 drivers and 1 passenger involved in public roadway collisions recorded without wearing restraining devices which resulted in 12 injuries.

Motor Vehicle Types: Mini-Van/MPV/SUVs were involved in 36.7 percent of public roadway collisions in 2022 while passenger cars represented 28.7 percent and pick-up/van 15.9 percent.

Parking lots and Unknown locations Collisions: In 2022, there were 805 reported collisions in parking lots and unknown locations. In 2021 and 2020, the number of reported collisions on parking lots and unknown locations were 625 and 619 collisions.

Table 1: Public Roadway Collisions Statistics 2020-2022

Statistics	2020	2021	2022
Public Roadways Collisions	1483	1444	1927
Collisions in Intersection	966	949	1336
Collisions in Midblock	490	456	568
Percentage Increase / Decrease	-33.7%	-2.6%	+33.4%
Fatal Collisions	1	2	0
Injury Collisions	133	112	132
Fatal and Injury Collisions	134	114	132
Property Damage Only Collisions	1349	1330	1795
Number of Injuries	157	137	167
Number of Fatalities	1	2	0
Pedestrian Collisions	17	21	22
Number of Pedestrian Injuries	14	21	20
Number of Pedestrian Fatalities	0	1	0
Bicycle Collisions	16	18	20
Number of Bicyclists Injuries	13	16	17
Number of Bicyclists Fatalities	0	0	0
Red Deer Population	101,992	100,844	100,844
Motor vehicles Registered in Red Deer Civic Address	83,801	84,098	81,951
Public Roadway Collisions/1000 Population	15	14	19
Public Roadway Collisions/1000 Registered Vehicles in Red Deer Civic Address	18	17	24

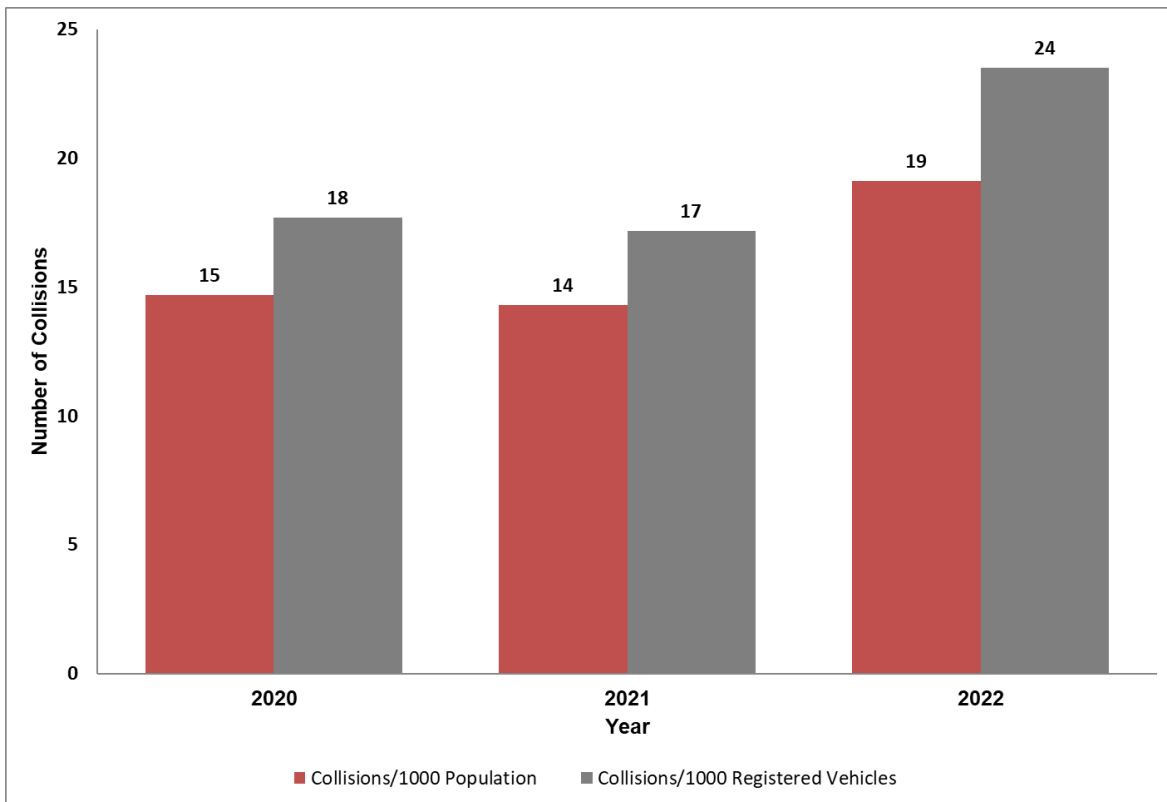


Figure 1: Public Roadway Collisions Rate Trend 2020-2022

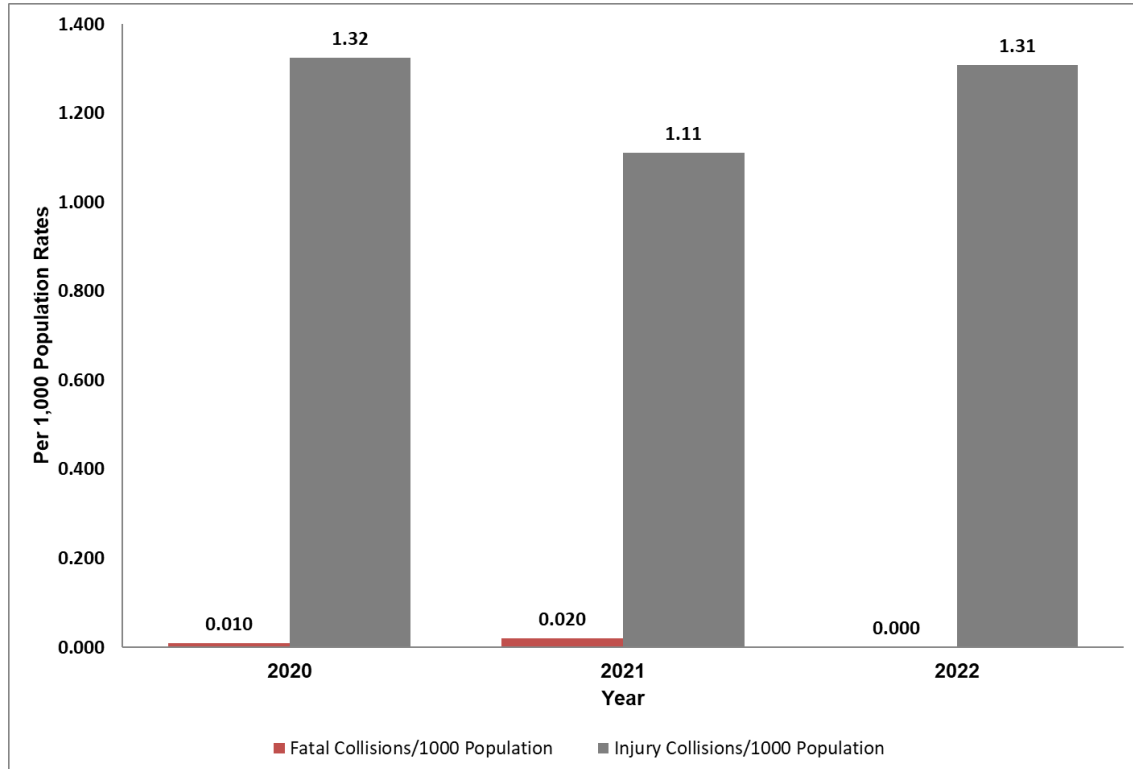


Figure 2: Fatal and Injury Collisions Rate Trend on Public Roadways 2020-2022

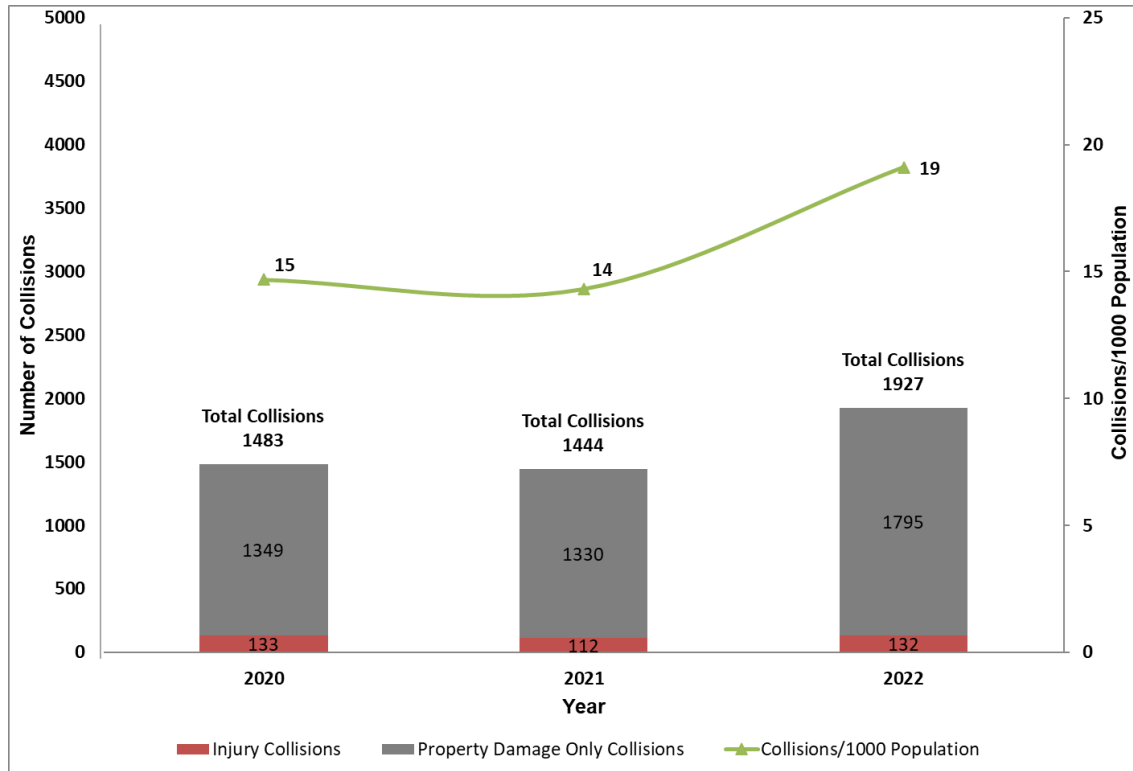


Figure 3: Public Roadway Collisions Trend 2020-2022

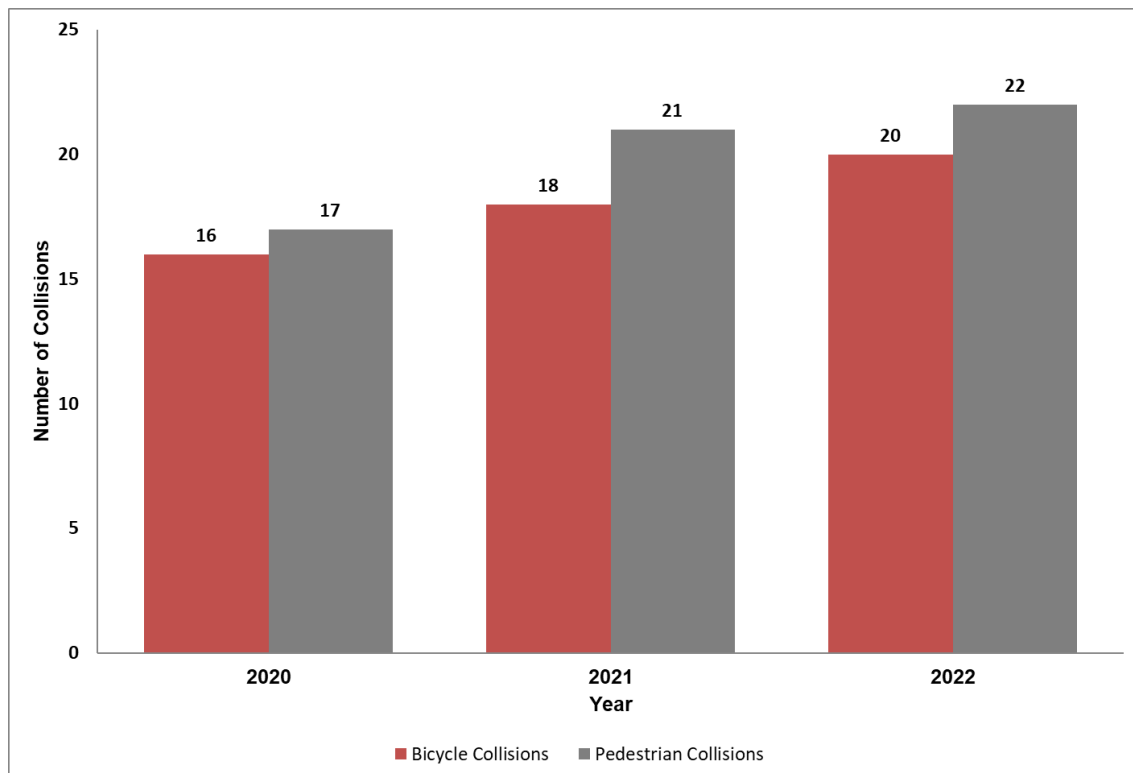


Figure 4: Pedestrian and Bicyclist Collisions on Public Roadways 2020-2022

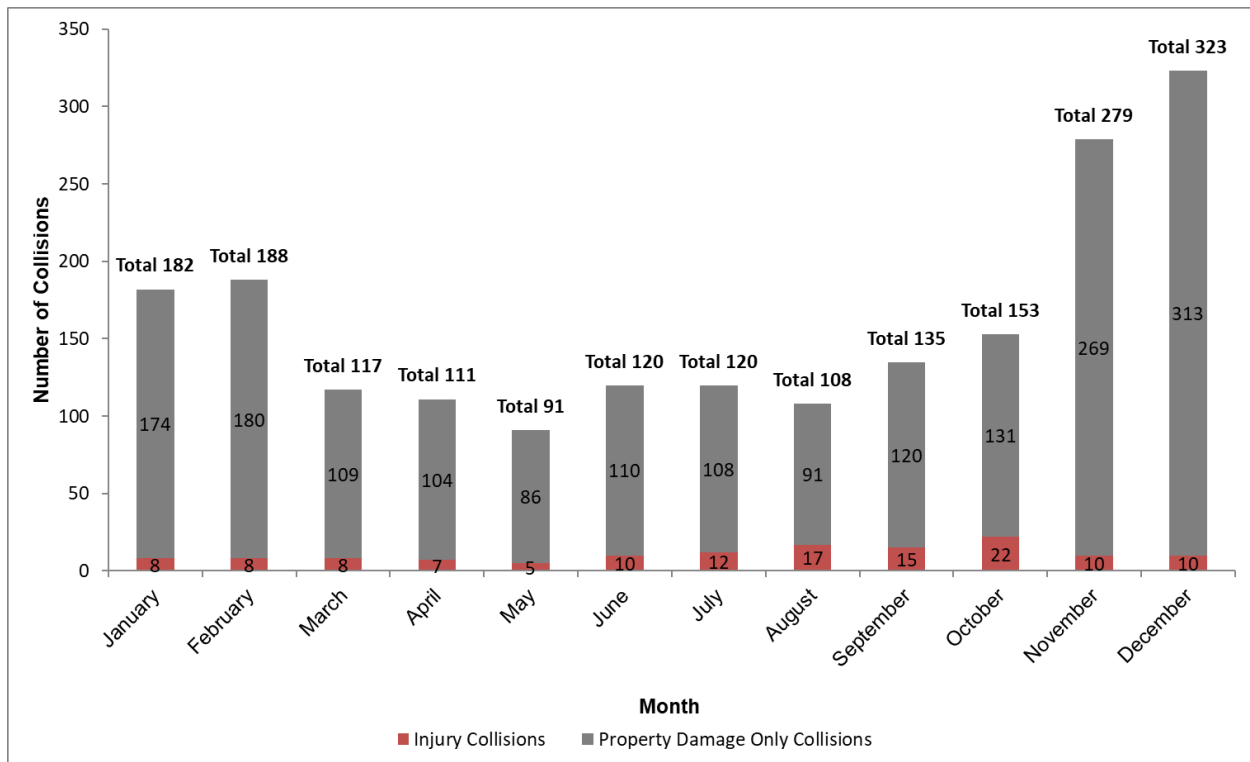


Figure 5 : 2022 Public Roadway Collisions by Month

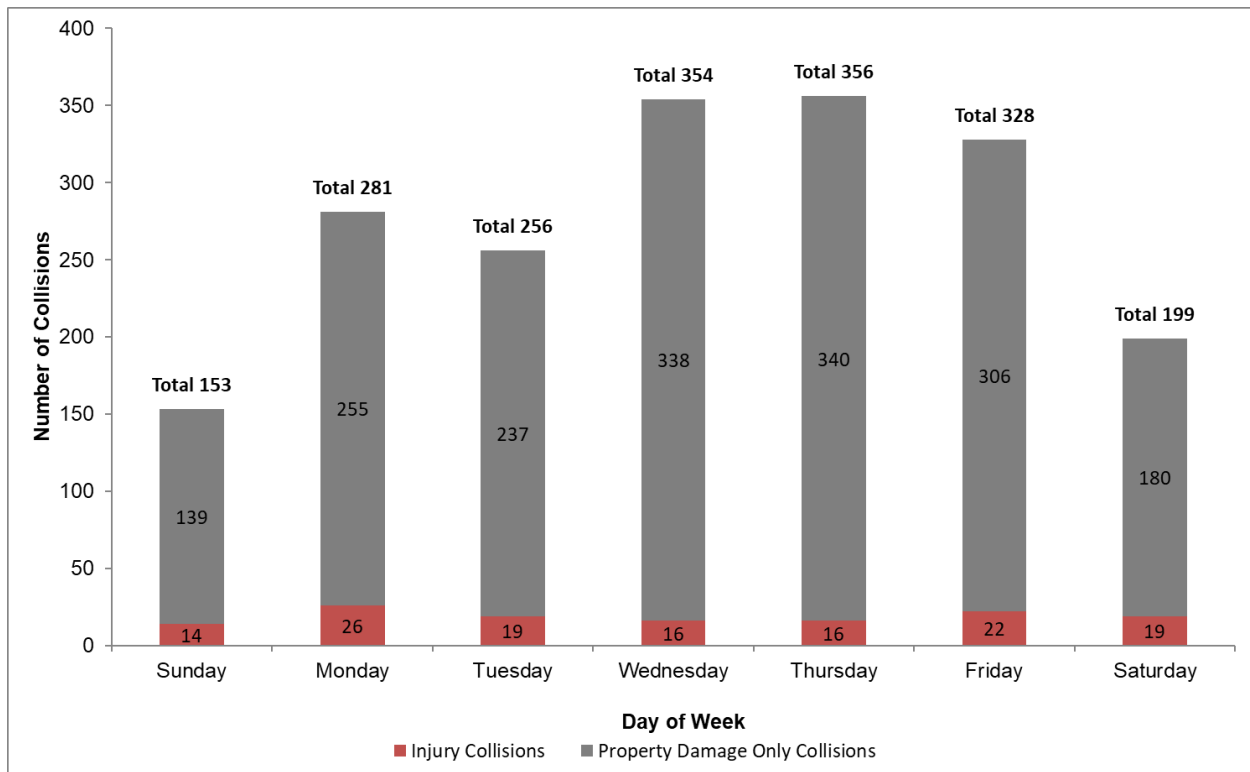


Figure 6: 2022 Public Roadway Collisions by Day of Week

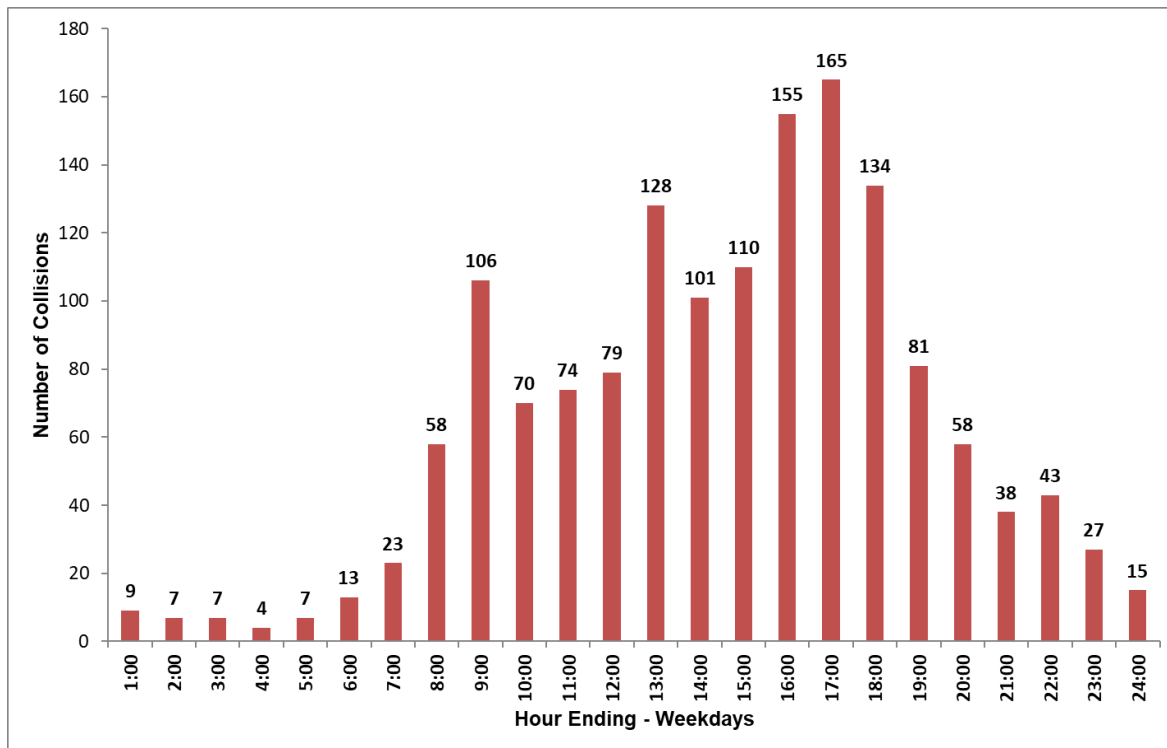


Figure 7: 2022 Public Roadway Collisions by Hour of Day (Weekdays)*

* 63 collisions occurred where time was unknown, was not given in the diagram

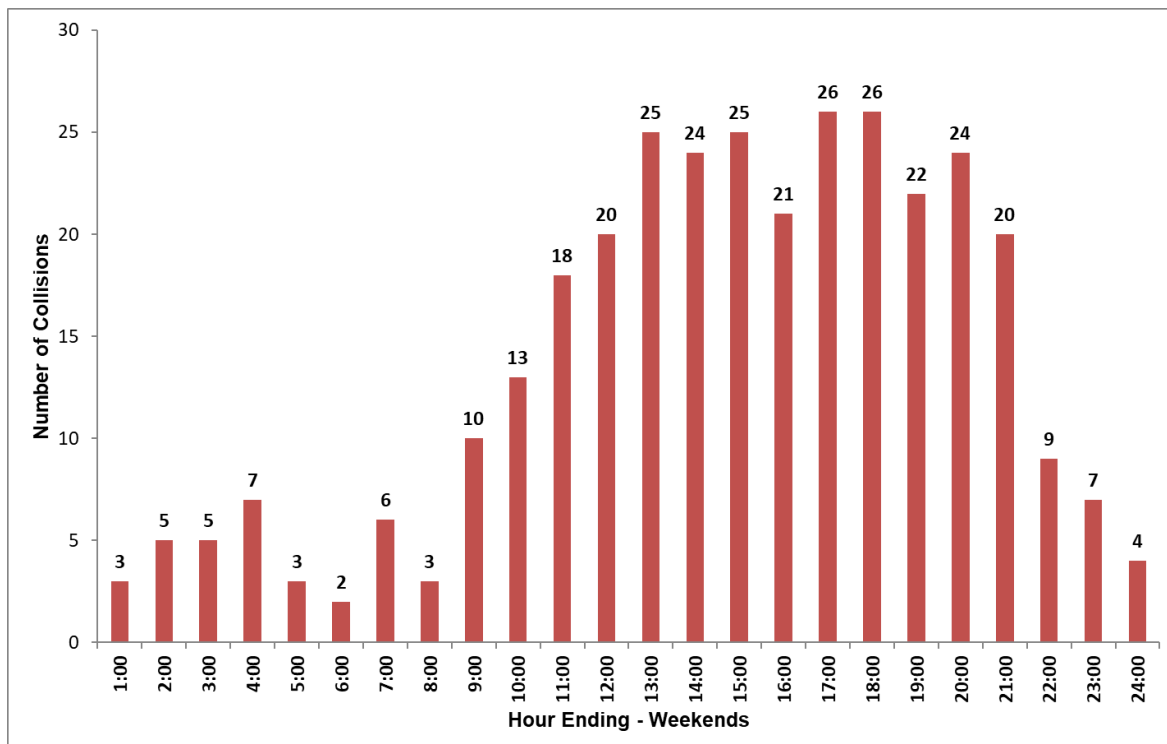


Figure 8: 2022 Public Roadway Collisions by Hour of Day (Weekends)*

* 24 collisions occurred where time was unknown, was not given in the diagram

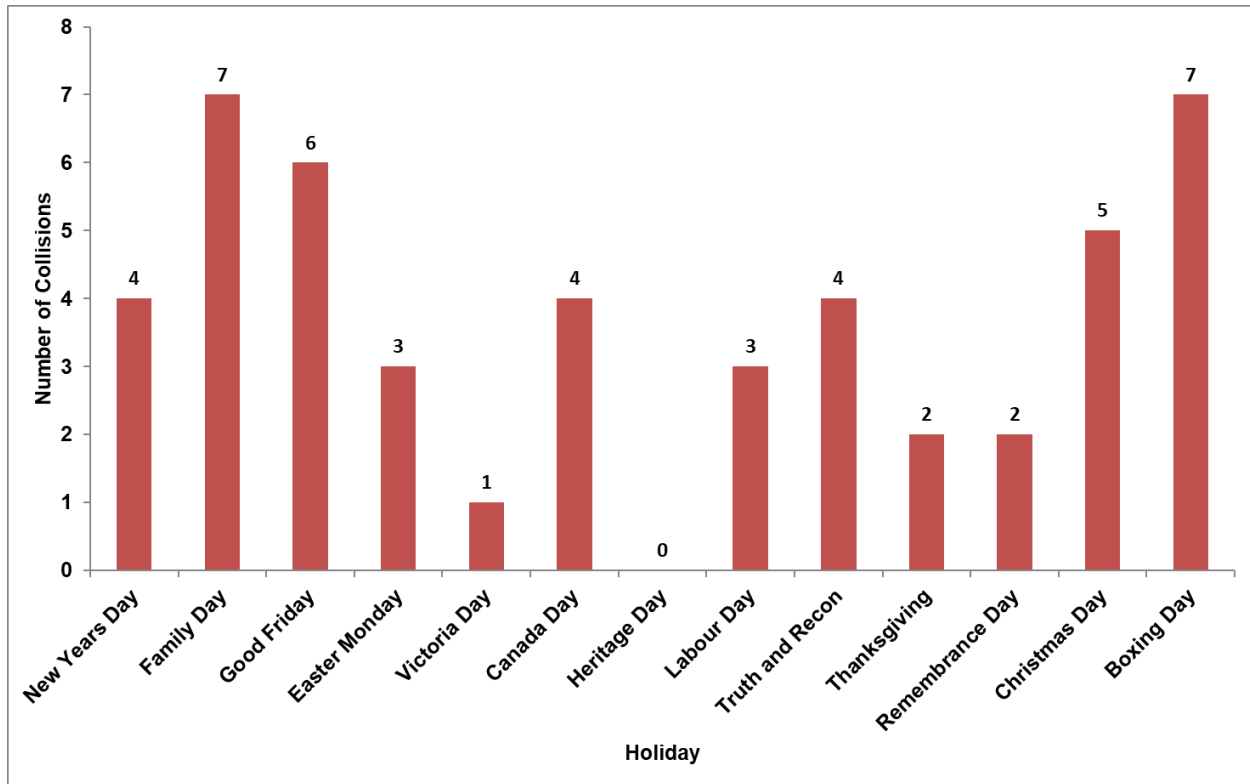


Figure 9: 2022 Public Roadway Collisions in Statutory Holidays

Public Roadway Collisions Summary

2022/01/01 TO 2022/12/31

Table 2 : Number of Collisions on Public Roadways in 2022

Statistics	2022
Motor Vehicle Collisions	1927
Motor Vehicles Involved	3747
Collisions Causing Fatalities	0
Fatalities Resulting	0
Collisions Causing Injury	132
Injuries Resulting	167
Property Damage Only Collisions	1795

Table 3: Fatalities and Injuries on Public Roadways in 2022

Travel Mode	Minor Injuries	Major Injuries	Fatal	Total
Vehicle Driver	83	21	0	104
Vehicle Passenger	16	1	0	17
Motorcyclist	1	3	0	4
Bicyclist	13	4	0	17
Pedestrian	17	3	0	20
Other, Unknown	5	0	0	5
Total	135	32	0	167

Roadway Summary

2022/01/01 TO 2022/12/31

Table 4: 2022 Collisions by Roadway Portion

Cause	Intersection	Midblock	Alley	At/Near Rail road crossing	Unknown	Total
Struck Object	133	248	4	1	1	387
Off Road Left	7	10	0	0	0	17
Right Angle	220	16	4	0	0	240
Passing-Left Turn	24	11	0	0	0	35
Left Turn- Across Path	170	8	0	0	0	178
Sideswipe - Opposite Direction	28	13	0	0	0	41
Other	11	12	0	0	0	23
Rear End	551	58	0	0	0	609
Off Road Right	14	22	0	0	0	36
Head On	9	2	2	0	0	13
Passing-Right Turn	17	4	1	0	0	22
Sideswipe - Same Direction	126	78	1	0	0	205
Backing	26	86	9	0	0	121
Total	1336	568	21	1	1	1927

Table 5: 2022 Public Roadway Collisions by Month and Road Surface Condition

Month	Dry	Wet	Slush/Snow/Ice	Loose Surface Material	Other/ Unknown	Total
January	20	11	146	0	5	182
February	28	14	137	0	9	188
March	70	7	37	0	3	117
April	89	6	13	0	3	111
May	83	4	0	2	2	91
June	105	14	0	0	1	120
July	113	6	0	0	1	120
August	106	0	0	1	1	108
September	132	1	0	1	1	135
October	139	3	4	1	6	153
November	19	13	246	0	1	279
December	16	7	293	1	6	323
Total	920	86	876	6	39	1927

Day/Time Summary

2022/01/01 TO 2022/12/31

Table 6: 2022 Public Roadway Collisions by Hour of Day and Day of Week

Hour Ending	Sun	Mon	Tue	Wed	Thu	Fri	Sat	Total
1:00	2	1	1	4	1	2	1	12
2:00	2	0	0	2	1	4	3	12
3:00	4	0	2	2	2	1	1	12
4:00	5	0	1	1	0	2	2	11
5:00	2	1	3	1	2	0	1	10
6:00	1	1	0	3	6	3	1	15
7:00	1	3	6	5	5	4	5	29
8:00	2	11	8	19	11	9	1	61
9:00	5	21	16	24	32	13	5	116
10:00	8	11	11	16	19	13	5	83
11:00	8	13	7	17	21	16	10	92
12:00	12	9	9	16	24	21	8	99
13:00	11	27	19	26	34	22	14	153
14:00	8	14	15	19	25	28	16	125
15:00	9	22	17	26	20	25	16	135
16:00	8	28	31	30	30	36	13	176
17:00	10	35	23	37	36	34	16	191
18:00	10	31	20	36	24	23	16	160
19:00	9	11	15	24	22	9	13	103
20:00	7	6	12	15	9	16	17	82
21:00	6	8	9	4	9	8	14	58
22:00	5	5	7	12	6	13	4	52
23:00	4	6	7	3	4	7	3	34
24:00	2	3	3	1	4	4	2	19
Unknown	12	14	14	11	9	15	12	87
Total	153	281	256	354	356	328	199	1927

Object Type Summary

2022/01/01 TO 2022/12/31

Table 7: Objects Involved in 2022 Motor Vehicle Collisions

Object Type	# Objects	Percentage
Passenger Car	1307	28.69%
Pick-Up/Van <4500kg	725	15.92%
Mini-Van/MPV/SUV	1673	36.73%
Truck >4500kg	201	4.41%
Truck Tractor	19	0.42%
Motorcycle/Scooter	8	0.18%
Pedestrian	22	0.48%
Bicycle	20	0.44%
School Bus	20	0.44%
Transit Bus	20	0.44%
Intercity Bus	9	0.20%
Other Bus	1	0.02%
Fixed Object	130	2.85%
Train	0	0.00%
Animal	52	1.14%
Motorhome	5	0.11%
Construction Equipment	0	0.00%
Emergency Vehicle	6	0.13%
Farm Equipment	0	0.00%
Off-Highway Vehicle	2	0.04%
Motorized Snow Vehicle	0	0.00%
Moped	0	0.00%
Unknown	335	7.35%
Total	4555	100.0%

Drivers Summary

2022/01/01 TO 2022/12/31

Table 8: Age and Action of Drivers involved in 2022 Public Roadway Collisions

Driver Action	10-14	15-19	20-24	25-34	35-44	45-54	55-64	65-74	75+	Unknown	Total	% of Action
Driving Properly	1	100	117	279	306	257	225	130	54	0	1469	37.8%
Stop Sign Violation	0	5	8	7	10	9	4	1	4	0	48	1.2%
Yield Sign Violation	0	2	4	8	4	7	5	2	1	0	33	0.8%
Fail To Yield Right of way at Uncontrolled Intersection	0	7	2	8	9	6	3	8	4	2	49	1.3%
Fail To Yield Right of way to Pedestrian	0	1	2	0	3	1	0	0	0	1	8	0.2%
Followed Too Closely	0	47	50	91	83	59	65	38	25	2	460	11.8%
Parked Vehicle	0	0	0	0	0	0	0	0	0	0	0	0.0%
Backed Unsafely	0	5	7	12	26	16	14	15	7	1	103	2.7%
Left Turn Across Path	0	22	21	26	18	18	15	8	8	0	136	3.5%
Improper Lane Change	0	8	8	14	18	9	9	15	7	1	89	2.3%
Disobey Traffic Signal	0	9	9	14	20	18	15	6	3	1	95	2.4%
Ran Off Road	2	11	5	13	16	5	6	2	1	0	61	1.6%
Improper Turn	0	9	4	18	11	13	11	5	3	3	77	2.0%
Left of Centre	0	5	4	6	4	5	2	2	0	0	28	0.7%
Improper Passing	0	5	4	4	6	4	5	0	0	0	28	0.7%
Other, Unknown	0	33	49	82	87	61	28	27	27	808	1202	30.9%
Total	3	269	294	582	621	488	407	259	134	829	3886	100%
% of Age	0.1%	6.9%	7.6%	15.0%	16.0%	12.6%	10.5%	6.7%	3.4%	21.3%	100%	

Condition/Safety Summary

2022/01/01 TO 2022/12/31

Table 9: Driver/Pedestrian Condition in 2022 Public Roadway Collisions

Driver/Pedestrian Condition	Drivers/Pedestrians #	Fatal Collisions	Injury Collisions	Property Damage Collisions
Had Been Drinking	7	0	1	6
Impaired by Alcohol	23	0	6	17
Impaired by Drugs	0	0	0	0
Fatigued/Asleep	5	0	2	3
Medical Defect	6	0	1	5
Unsafe Speed	155	0	36	119

Table 10: Safety Equipment Used in 2022 Public Roadway Collisions

Safety Equipment	Drivers #	Collision Severity				Passenger #	Collision Severity			
		None	Minor	Major	Fatal		None	Minor	Major	Fatal
Lap belt only	57	56	1	0	0	14	14	0	0	0
Lap/Shoulder belt assembly	2803	2745	49	9	0	368	360	8	0	0
Shoulder belt only	30	28	2	0	0	4	4	0	0	0
Lap/Shoulder with Air Bag	209	173	31	5	0	14	9	5	0	0
Airbag	17	13	3	1	0	2	0	1	1	0
None	77	65	6	6	0	1	0	0	0	0
Other/Specify	0	0	0	0	0	76	75	1	0	0
Unknown	617	606	10	1	0	22	21	1	0	0

Pedestrian Collisions

2022/01/01 TO 2022/12/31

Table 11: Pedestrian Collisions Summary in 2020 Public Roadways Collisions

Statistics	2022
Collisions Involving Pedestrian	22
Pedestrians Involved	22
Collisions resulting in Pedestrian Injury or Fatality	20
Pedestrian Injuries	20
Pedestrian Fatalities	0

Table 12: Age and Action of Pedestrians involved in 2022 Public Roadways Collisions

Pedestrian Action	1-4	5-9	10-14	15-19	20-24	25-34	35-44	45-54	55-64	65-74	75+	Unknown	Total	% of Action
Crossing with Right of Way	0	1	2	1	2	1	3	2	0	1	0	0	13	59.1%
Crossing without Right of Way	0	0	0	0	0	0	1	0	0	0	0	0	1	4.6%
Walking/Working on Roadway	0	0	0	0	2	0	0	1	0	1	0	0	4	18.2%
Getting on/off vehicle	0	0	0	0	0	0	1	0	2	1	0	0	4	18.2%
Other, Unknown	0	0	0	0	0	0	0	0	0	0	0	0	0	0.0%
Total	0	1	2	1	4	1	5	3	2	3	0	0	22	100%
% of Age	0.0%	4.6%	9.1%	4.6%	18.2%	4.6%	22.7%	13.6%	9.1%	13.6%	0.0%	0.0%	100%	

Bicycle Collisions

2022/01/01 TO 2022/12/31

Table 13: Bicyclist Collisions Summary in 2022 Public Roadways Collisions

Statistics	2022
Bicyclist Collisions	20
Bicyclists Involved	20
Collisions resulting in Bicyclist Injury or Fatality	17
Bicyclist Injuries	17
Bicyclist Fatalities	0

Table 14: Age and Action of Bicyclists involved in 2022 Public Roadway Collisions

Bicyclist Action	1-4	5-9	10-14	15-19	20-24	25-34	35-44	45-54	55-64	65-74	75+	Unknown	Total	% of Action
Driving Properly	0	0	0	1	2	1	2	2	1	0	0	0	9	45.0%
Stop Sign Violation	0	0	0	0	0	0	0	0	0	0	0	0	0	0.0%
Yield Sign Violation	0	0	0	0	0	0	0	0	0	0	0	0	0	0.0%
Fail To Yield Right of Way at Uncontrolled Intersection	0	0	0	0	0	0	0	0	0	0	0	0	0	0.0%
Fail To Yield Right of Way to Pedestrian	0	0	1	0	0	0	0	0	0	0	0	0	1	5.0%
Followed Too Closely	0	0	0	0	0	0	0	0	0	0	0	0	0	0.0%
Parked Vehicle	0	0	0	0	0	0	0	0	0	0	0	0	0	0.0%
Backed Unsafely	0	0	0	0	0	0	0	0	0	0	0	0	0	0.0%
Left Turn Across Path	0	0	0	0	0	0	0	0	0	0	0	0	0	0.0%
Improper Lane Change	0	0	0	0	0	0	0	0	0	0	0	0	0	0.0%
Disobey Traffic Signal	0	1	1	0	0	0	0	1	0	1	0	0	4	20.0%
Ran Off Road	0	0	0	0	0	0	0	0	0	0	0	0	0	0.0%
Improper Passing	0	0	0	0	0	2	0	0	0	0	0	0	2	10.0%
Left of Centre	0	0	0	0	0	0	0	1	0	1	0	0	2	10.0%
Improper Turn	0	0	0	0	0	0	0	0	0	0	0	0	0	0.0%
Other, Unknown	0	0	1	0	0	0	1	0	0	0	0	0	2	10.0%
Total	0	1	3	1	2	3	3	4	1	2	0	0	20	100%
% of Age	0.0%	5.0%	15.0%	5.0%	10.0%	15.0%	15.0%	20.0%	5.0%	10.0%	0.0%	0.0%	100%	